



[Go to Product page](#)

Datasheet for ABIN7074778
anti-NKp44/NCR2 antibody

2 Images

Overview

Quantity:	100 µL
Target:	NKp44/NCR2 (NCR2)
Reactivity:	Human, Mouse
Host:	Rabbit
Clonality:	Polyclonal
Conjugate:	This NKp44/NCR2 antibody is un-conjugated
Application:	Immunohistochemistry (IHC), Immunofluorescence (IF)

Product Details

Immunogen:	KLH conjugated Synthetic peptide corresponding to Human NK-p44
Cross-Reactivity:	Mouse
Purification:	Affinity purification

Target Details

Target:	NKp44/NCR2 (NCR2)
Alternative Name:	NK-p44 (NCR2 Products)
Background:	NCR2 (NKp44) is a member of the natural cytotoxicity receptor (NCR) family that is expressed on activated human NK cells. NCR2 displays a single extracellular Ig-like V domain and a transmembrane portion containing the charged residue (Lysine), likely involved in the association with KARAP/DAP12 Molecules.
Gene ID:	9436

Target Details

NCBI Accession: [NP_001186438](#)

UniProt: [O95944](#)

Application Details

Application Notes: IHC/IF (H,M) 1:500-1:1000/1:250-1:500

Restrictions: For Research Use only

Handling

Format: Liquid

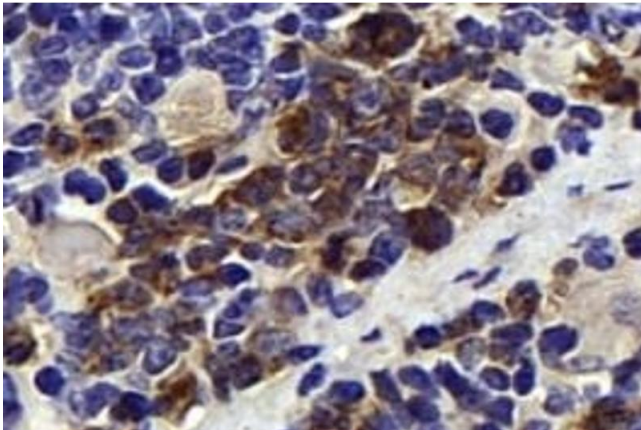
Buffer: PBS, pH 7.4, 0.02 % sodium azide

Preservative: Sodium azide

Precaution of Use: This product contains Sodium azide: a POISONOUS AND HAZARDOUS SUBSTANCE which should be handled by trained staff only.

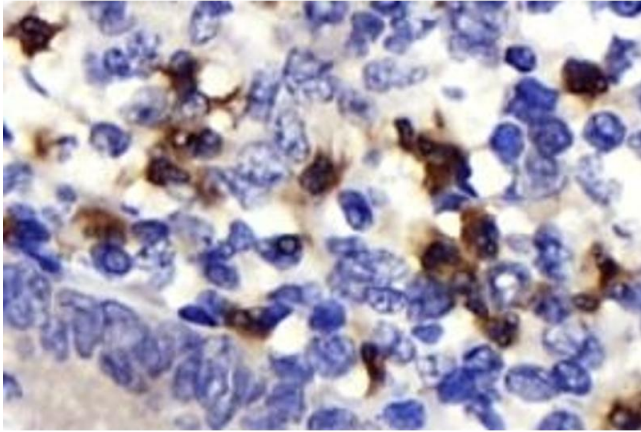
Storage: -20 °C

Images



Immunohistochemistry (Paraffin-embedded Sections)

Image 1. Immunohistochemistry analysis of paraffin-embedded mouse spleen using NK-p44 (ABIN7074778) at dilution of 1: 500



Immunohistochemistry (Paraffin-embedded Sections)

Image 2. Immunohistochemistry analysis of paraffin-embedded human epityphlon using NK-p44 (ABIN7074778) at dilution of 1: 500