



[Go to Product page](#)

Datasheet for ABIN7074804
anti-Neuregulin 2 antibody

4 Images

Overview

Quantity:	100 µL
Target:	Neuregulin 2 (NRG2)
Reactivity:	Rat, Mouse
Host:	Rabbit
Clonality:	Polyclonal
Conjugate:	This Neuregulin 2 antibody is un-conjugated
Application:	Western Blotting (WB), Immunohistochemistry (IHC), Immunofluorescence (IF)

Product Details

Immunogen:	Recombinant protein corresponding to Human NRG2
Cross-Reactivity:	Mouse, Rat
Purification:	Affinity purification

Target Details

Target:	Neuregulin 2 (NRG2)
Alternative Name:	NRG2 (NRG2 Products)
Background:	This gene encodes a novel member of the neuregulin family of growth and differentiation factors. Through interaction with the ERBB family of receptors, this protein induces the growth and differentiation of epithelial, neuronal, glial, and other types of cells. The gene consists of 12 exons and the genomic structure is similar to that of neuregulin 1, another member of the neuregulin family of ligands. The products of these genes mediate distinct biological processes

Target Details

by acting at different sites in tissues and eliciting different biological responses in cells. This gene is located close to the region for demyelinating Charcot-Marie-Tooth disease locus, but is not responsible for this disease.

Molecular Weight:	95 kDa
Gene ID:	9542
NCBI Accession:	NP_001171864
UniProt:	O14511
Pathways:	RTK Signaling , Fc-epsilon Receptor Signaling Pathway , EGFR Signaling Pathway , Neurotrophin Signaling Pathway

Application Details

Application Notes:	WB (M) 1:500-1:1000, IHC/IF (M,R) 1:500-1:1500/1:500-1:1000
Restrictions:	For Research Use only

Handling

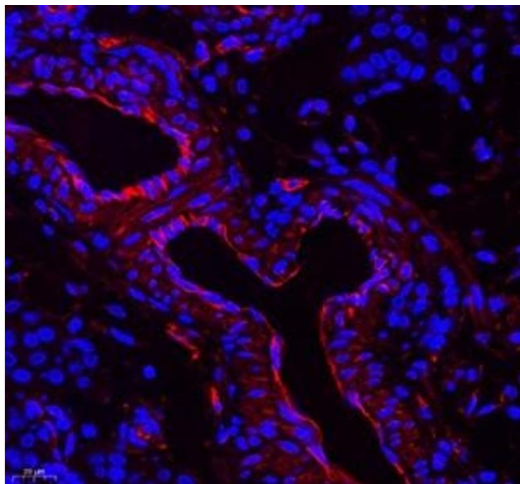
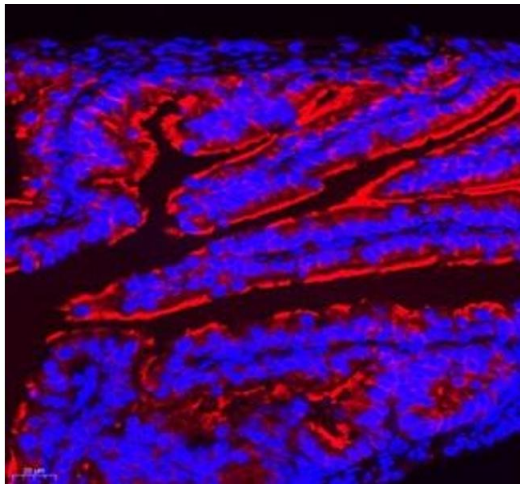
Format:	Liquid
Buffer:	PBS, pH 7.4, 0.02 % sodium azide
Preservative:	Sodium azide
Precaution of Use:	This product contains Sodium azide: a POISONOUS AND HAZARDOUS SUBSTANCE which should be handled by trained staff only.
Storage:	-20 °C

Mouse testis

130 kDa —

95 kDa —  NRG2

72 kDa —



Western Blotting

Image 1. Western blot analysis of NRG2 (ABIN7074804) at dilution of 1: 500

Immunofluorescence (Paraffin-embedded Sections)

Image 2. Immunofluorescence of paraffin embedded mouse ovary using NRG2 (ABIN7074804) at dilution of 1: 500 (400x lens)

Immunofluorescence (Paraffin-embedded Sections)

Image 3. Immunofluorescence of paraffin embedded rat ovary using NRG2 (ABIN7074804) at dilution of 1: 500 (400x lens)

Please check the [product details page](#) for more images. Overall 4 images are available for ABIN7074804.