

Datasheet for ABIN7074850

anti-NLRP1 antibody[Go to Product page](#)**1** Image

Overview

Quantity:	100 µL
Target:	NLRP1
Reactivity:	Mouse, Rat
Host:	Rabbit
Clonality:	Polyclonal
Conjugate:	This NLRP1 antibody is un-conjugated
Application:	Immunohistochemistry (IHC), Immunofluorescence (IF)

Product Details

Immunogen:	Recombinant protein corresponding to Mouse NLRP1
Cross-Reactivity:	Rat
Purification:	Affinity purification

Target Details

Target:	NLRP1
Alternative Name:	NLRP1 (NLRP1 Products)
Background:	<p>NACHT, LRR and PYD domains-containing protein 1 is a member of the Ced-4 family of apoptosis proteins. Ced-family members contain a caspase recruitment domain (CARD) and are known to be key mediators of programmed cell death. The encoded protein contains a distinct N-terminal pyrin-like motif, which is possibly involved in protein-protein interactions.</p> <p>The NLRP1 protein interacts strongly with caspase 2 and weakly with caspase 9.</p>

Target Details

Overexpression of this gene was demonstrated to induce apoptosis in cells. Multiple alternatively spliced transcript variants encoding distinct isoforms have been found for this gene, but the biological validity of some variants has not been determined.

Gene ID: 195046

NCBI Accession: [NP_001004142](#)

UniProt: [Q2LKU9](#)

Pathways: [Positive Regulation of Endopeptidase Activity](#), [Inflammasome](#)

Application Details

Application Notes: IHC/IF (M,R) 1:500-1:2000/1:250-1:500

Restrictions: For Research Use only

Handling

Format: Liquid

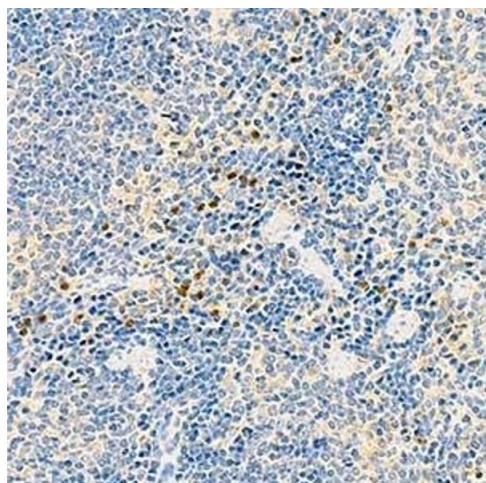
Buffer: PBS, pH 7.4, 0.02 % sodium azide

Preservative: Sodium azide

Precaution of Use: This product contains Sodium azide: a POISONOUS AND HAZARDOUS SUBSTANCE which should be handled by trained staff only.

Storage: -20 °C

Images



Immunohistochemistry (Paraffin-embedded Sections)

Image 1. Immunohistochemistry analysis of paraffin-embedded mouse spleen using NLRP1 (ABIN7074850) at dilution of 1: 1000