



[Go to Product page](#)

Datasheet for ABIN7074906
anti-Nucleolin antibody

3 Images

Overview

Quantity:	100 µL
Target:	Nucleolin (NCL)
Reactivity:	Human, Mouse, Rat
Host:	Rabbit
Clonality:	Polyclonal
Conjugate:	This Nucleolin antibody is un-conjugated
Application:	Western Blotting (WB), Immunohistochemistry (IHC), Immunofluorescence (IF)

Product Details

Immunogen:	KLH conjugated Synthetic peptide corresponding to Mouse Nucleolin
Cross-Reactivity:	Human, Rat
Purification:	Affinity purification

Target Details

Target:	Nucleolin (NCL)
Alternative Name:	Nucleolin (NCL Products)
Background:	Nucleolin is the major nucleolar protein of growing eukaryotic cells. It is found associated with intranucleolar chromatin and pre-ribosomal particles. It induces chromatin decondensation by binding to histone H1. It is thought to play a role in pre-rRNA transcription and ribosome assembly. May play a role in the process of transcriptional elongation. Binds RNA oligonucleotides with 5'-UUAGGG-3' repeats more tightly than the telomeric single-stranded

Target Details

	DNA 5'-TTAGGG-3' repeats.
Molecular Weight:	110 kDa
Gene ID:	17975
NCBI Accession:	NP_035010
UniProt:	P09405
Pathways:	Ribonucleoprotein Complex Subunit Organization

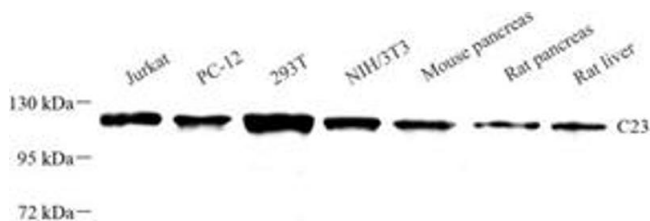
Application Details

Application Notes:	WB (H,M,R) 1:500-1:1000, IHC/IF (H,M,R) 1:500-1:1000/1:500-1:1000
Restrictions:	For Research Use only

Handling

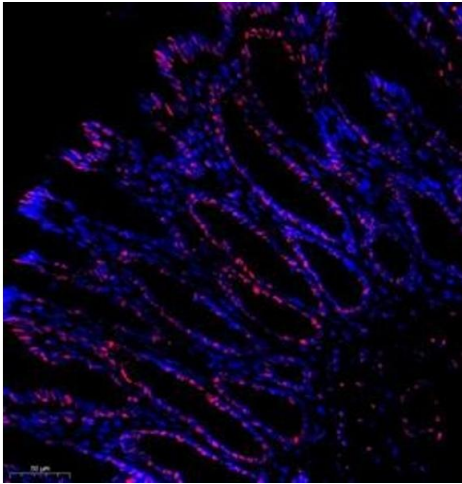
Format:	Liquid
Buffer:	PBS, pH 7.4, 0.02 % sodium azide
Preservative:	Sodium azide
Precaution of Use:	This product contains Sodium azide: a POISONOUS AND HAZARDOUS SUBSTANCE which should be handled by trained staff only.
Storage:	-20 °C

Images



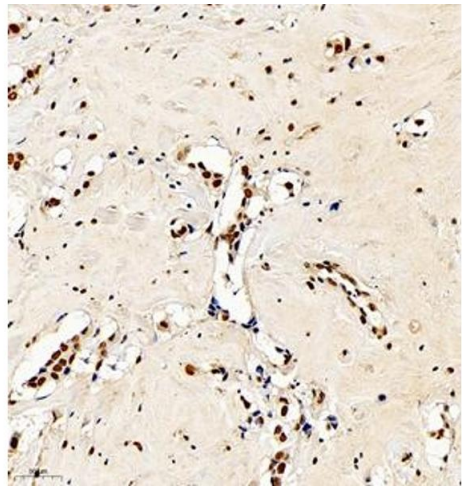
Western Blotting

Image 1. Western blot analysis of C23 (ABIN7074906) at dilution of 1: 1000



Immunofluorescence (Paraffin-embedded Sections)

Image 2. Immunofluorescence analysis of paraffin embedded rat colon using C23 (ABIN7074906) at dilution of 1: 500



Immunohistochemistry (Paraffin-embedded Sections)

Image 3. Immunohistochemistry analysis of paraffin embedded human breast cancer using C23 (ABIN7074906) at dilution of 1: 550