



Datasheet for ABIN7074942

## anti-O3FAR1 antibody



[Go to Product page](#)

### 7 Images

#### Overview

Quantity:	100 µL
Target:	O3FAR1
Reactivity:	Mouse, Rat
Host:	Rabbit
Clonality:	Polyclonal
Conjugate:	This O3FAR1 antibody is un-conjugated
Application:	Immunofluorescence (IF), Immunohistochemistry (IHC)

#### Product Details

Immunogen:	KLH conjugated Synthetic peptide corresponding to Mouse GPR120
Cross-Reactivity:	Rat
Purification:	Affinity purification

#### Target Details

Target:	O3FAR1
Alternative Name:	GPCR GPR120 ( <a href="#">O3FAR1 Products</a> )
Background:	GPR120, a member of the rhodopsin family of G protein-coupled receptors (GPCRs), is a 377 amino acid protein which is expressed in the intestine. GPR120 is a receptor for unsaturated long-chain FFAs (free fatty acids). FFAs act as signaling molecules and are an important energy source. They also employ various physiological responses through their GPCRs. One such response occurs when dietary FFAs stimulate GPR120. This stimulation promotes the

## Target Details

---

secretion of glucagon-like peptide 1 (GLP-1) in vivo and in vitro. GLP-1 belongs to the class of molecules known as the incretins, which are associated with insulin secreted from the pancreas as a result of food intake. GLP-1 also inhibits glucagon and gastric acid secretion and gastric emptying. Consequently, the role of GPR120 in the secretion of GLP-1 is critical in the treatment of diabetes.

Gene ID:	107221
NCBI Accession:	<a href="#">NP_861413</a>
UniProt:	<a href="#">Q7TMA4</a>
Pathways:	<a href="#">Hormone Transport</a>

## Application Details

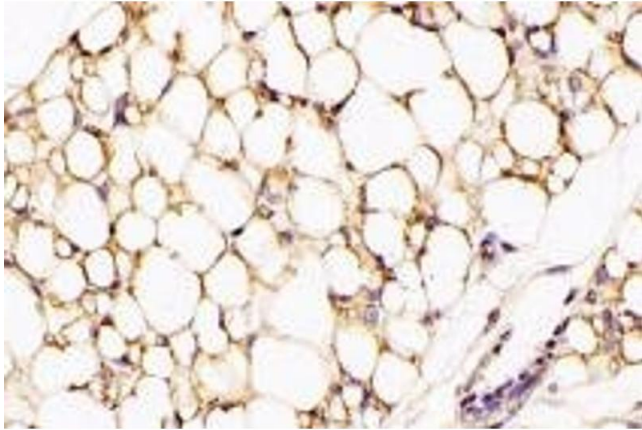
---

Application Notes:	IHC/IF (M,R) 1:1000-1:2000/1:1000-1:2000
Restrictions:	For Research Use only

## Handling

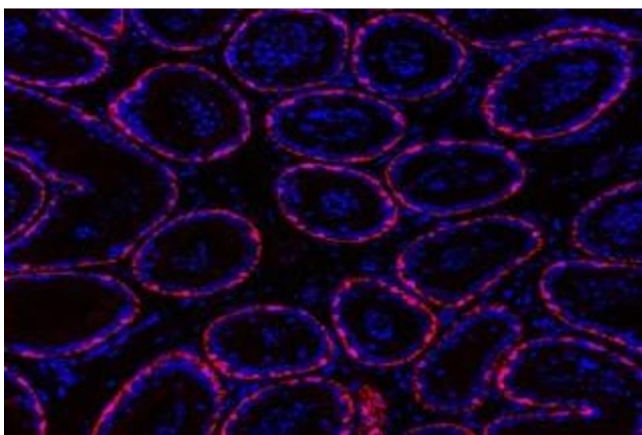
---

Format:	Liquid
Buffer:	PBS, pH 7.4, 0.02 % sodium azide
Preservative:	Sodium azide
Precaution of Use:	This product contains Sodium azide: a POISONOUS AND HAZARDOUS SUBSTANCE which should be handled by trained staff only.
Storage:	-20 °C



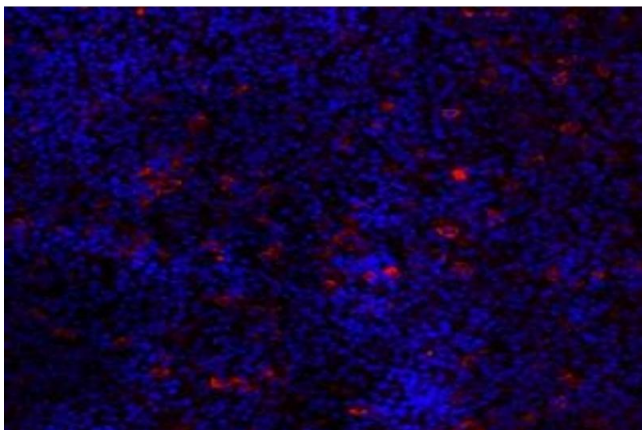
#### Immunohistochemistry (Paraffin-embedded Sections)

**Image 1.** Immunohistochemistry analysis of paraffin-embedded rat white fat using GPR120 (ABIN7074942) at dilution of 1: 2000



#### Immunofluorescence (fixed cells)

**Image 2.** Immunofluorescent analysis of paraformaldehyde-fixed mouse epididymis using GPR120 (ABIN7074942) at dilution of 1: 2000



#### Immunofluorescence (fixed cells)

**Image 3.** Immunofluorescent analysis of paraformaldehyde-fixed mouse pituitary using GPR120 (ABIN7074942) at dilution of 1: 2000

Please check the [product details page](#) for more images. Overall 7 images are available for ABIN7074942.