

Datasheet for ABIN7074974 **anti-PAX2A antibody**



[Go to Product page](#)

4 Images

Overview

Quantity:	100 µL
Target:	PAX2A
Reactivity:	Human, Mouse, Rat
Host:	Rabbit
Clonality:	Polyclonal
Conjugate:	This PAX2A antibody is un-conjugated
Application:	Immunohistochemistry (IHC), Immunofluorescence (IF)

Product Details

Immunogen:	Recombinant protein corresponding to Mouse Pax2
Cross-Reactivity:	Human, Rat
Purification:	Affinity purification

Target Details

Target:	PAX2A
Alternative Name:	Pax2 (PAX2A Products)
Background:	Paired box gene 2, also known as PAX2 is a protein encoded by the PAX2 gene. The protein plays important roles in the development and proliferation of multiple cell lines, development of organs, and development and organization of the central nervous system. The transcription factor gene Pax2 is important in the regionalized embryological development of the central nervous system. In mammals, the brain is developed in three regions: the forebrain, midbrain,

Target Details

and the hindbrain.

Gene ID: 18504

NCBI Accession: [NP_035167](#)

UniProt: [P32114](#)

Pathways: [Carbohydrate Homeostasis](#), [Stem Cell Maintenance](#), [Tube Formation](#)

Application Details

Application Notes: IHC/IF (H,M,R) 1:600-1:2000/1:300-1:1000

Restrictions: For Research Use only

Handling

Format: Liquid

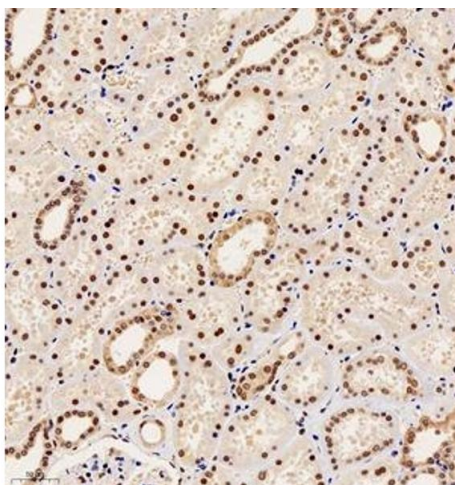
Buffer: PBS, pH 7.4, 0.02 % sodium azide

Preservative: Sodium azide

Precaution of Use: This product contains Sodium azide: a POISONOUS AND HAZARDOUS SUBSTANCE which should be handled by trained staff only.

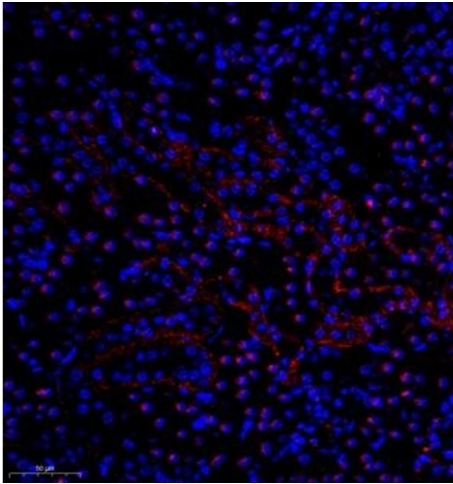
Storage: -20 °C

Images



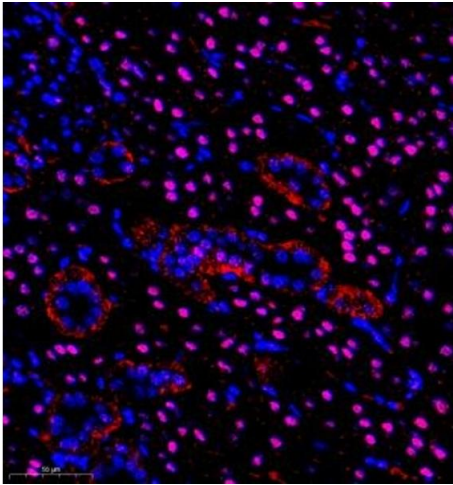
Immunohistochemistry (Paraffin-embedded Sections)

Image 1. Immunohistochemistry of paraffin embedded human kidney using PAX2 (ABIN7074974) at dilution of 1:1000 (200x lens)



Immunofluorescence (Paraffin-embedded Sections)

Image 2. Immunofluorescence of paraffin embedded mouse nephritis using pax2 (ABIN7074974) at dilution of 1:600 (300x lens)



Immunofluorescence (Paraffin-embedded Sections)

Image 3. Immunofluorescence of paraffin embedded rat kidney using pax2 (ABIN7074974) at dilution of 1:600 (350x lens)

Please check the [product details page](#) for more images. Overall 4 images are available for ABIN7074974.