

Datasheet for ABIN7074997

anti-PSIP1 antibody**2** Images[Go to Product page](#)

Overview

Quantity:	100 µL
Target:	PSIP1
Reactivity:	Rat, Mouse
Host:	Rabbit
Clonality:	Polyclonal
Conjugate:	This PSIP1 antibody is un-conjugated
Application:	Immunohistochemistry (IHC), Immunofluorescence (IF)

Product Details

Immunogen:	Recombinant protein corresponding to Mouse PSIP1/LEDGF
Cross-Reactivity:	Rat
Purification:	Affinity purification

Target Details

Target:	PSIP1
Alternative Name:	PSIP1/LEDGF (PSIP1 Products)
Background:	Transcriptional coactivator involved in neuroepithelial stem cell differentiation and neurogenesis. Involved in particular in lens epithelial cell gene regulation and stress responses. May play an important role in lens epithelial to fiber cell terminal differentiation. May play a protective role during stress-induced apoptosis. Isoform 2 is a more general and stronger transcriptional coactivator. Isoform 2 may also act as an adapter to coordinate pre-mRNA

Target Details

splicing. Cellular cofactor for lentiviral integration.. This protein has 2 isoforms produced by alternative splicing.

Gene ID: 101739

UniProt: [Q99JF8](#)

Pathways: [Chromatin Binding](#), [Ribonucleoprotein Complex Subunit Organization](#)

Application Details

Application Notes: IHC/IF (M,R) 1:1500-1:3000

Restrictions: For Research Use only

Handling

Format: Liquid

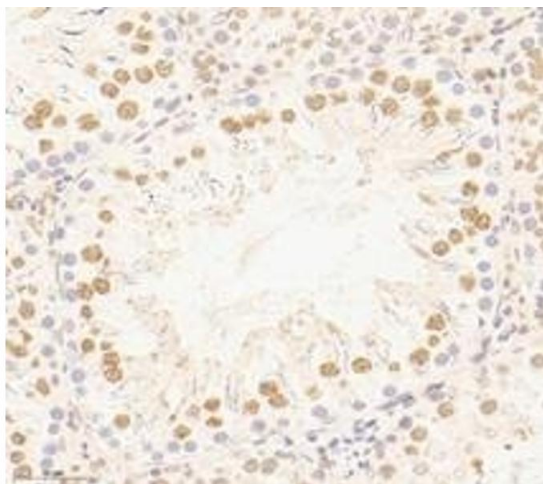
Buffer: PBS, pH 7.4, 0.02 % sodium azide

Preservative: Sodium azide

Precaution of Use: This product contains Sodium azide: a POISONOUS AND HAZARDOUS SUBSTANCE which should be handled by trained staff only.

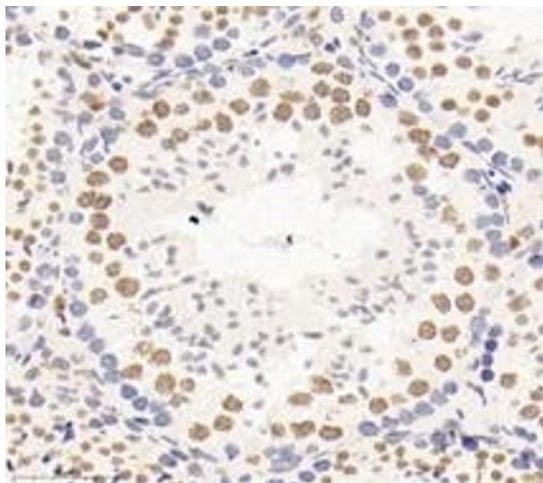
Storage: -20 °C

Images



Immunohistochemistry (Paraffin-embedded Sections)

Image 1. Immunohistochemistry analysis of paraffin-embedded rat testis using PSIP1 (ABIN7074997) at dilution of 1: 3000



Immunohistochemistry (Paraffin-embedded Sections)

Image 2. Immunohistochemistry analysis of paraffin-embedded mouse testis using PSIP1 (ABIN7074997) at dilution of 1:3000