

## Datasheet for ABIN7075111 anti-PLK5 antibody

### 2 Images



[Go to Product page](#)

### Overview

Quantity:	100 µL
Target:	PLK5
Reactivity:	Mouse, Rat
Host:	Rabbit
Clonality:	Polyclonal
Conjugate:	This PLK5 antibody is un-conjugated
Application:	Immunohistochemistry (IHC), Immunofluorescence (IF)

### Product Details

Immunogen:	KLH conjugated Synthetic peptide corresponding to Mouse PLK5
Cross-Reactivity:	Rat
Purification:	Affinity purification

### Target Details

Target:	PLK5
Alternative Name:	<a href="#">PLK5 (PLK5 Products)</a>
Background:	PLK5, also named as PLK5P, is an inactive serine/threonine-protein kinase that plays a role in cell cycle progression and neuronal differentiation. Compared with mouse Plk5, the protein kinase domain of human PLK5 is truncated. This is the reason that the MW of mouse Plk5 is about 50-70 kDa, the MW of human PLK5 is about 32-40 kDa. This antibody detects both PLK5 gene of human and mouse.

## Target Details

---

Gene ID: 216166

NCBI Accession: [NP\\_001334053](#)

UniProt: [Q4FZD7](#)

## Application Details

---

Application Notes: IHC/IF (M,R) 1:2000-1:4000

Restrictions: For Research Use only

## Handling

---

Format: Liquid

Buffer: PBS, pH 7.4, 0.02 % sodium azide

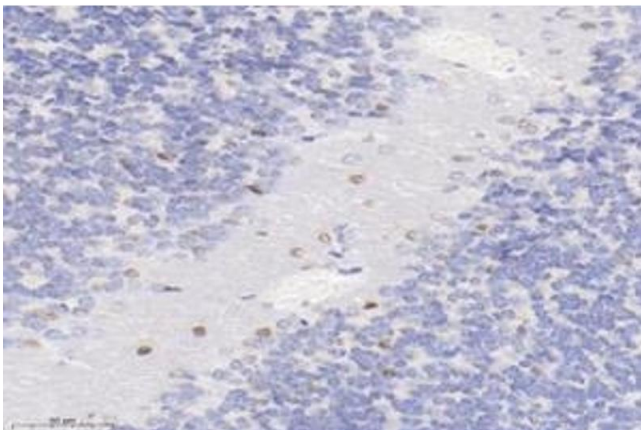
Preservative: Sodium azide

Precaution of Use: This product contains Sodium azide: a POISONOUS AND HAZARDOUS SUBSTANCE which should be handled by trained staff only.

Storage: -20 °C

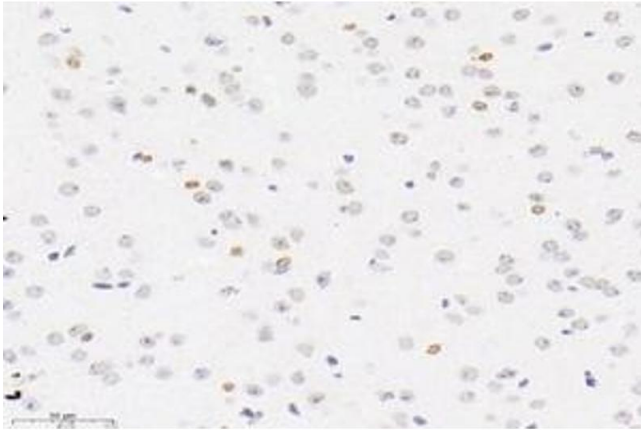
## Images

---



### Immunohistochemistry (Paraffin-embedded Sections)

**Image 1.** Immunohistochemistry analysis of paraffin-embedded mouse cerebellum using PLK5 (ABIN7075111) at dilution of 1: 4000



### Immunohistochemistry (Paraffin-embedded Sections)

**Image 2.** Immunohistochemistry analysis of paraffin-embedded mouse brain using, PLK5 (ABIN7075111) at dilution of 1: 4000