



[Go to Product page](#)

Datasheet for ABIN7075130

anti-POLD3 antibody

4 Images

Overview

Quantity:	100 µL
Target:	POLD3
Reactivity:	Mouse, Rat
Host:	Rabbit
Clonality:	Polyclonal
Conjugate:	This POLD3 antibody is un-conjugated
Application:	Immunofluorescence (IF), Immunohistochemistry (IHC)

Product Details

Immunogen:	Recombinant protein corresponding to Mouse POLD3
Cross-Reactivity:	Rat
Purification:	Affinity purification

Target Details

Target:	POLD3
Alternative Name:	POLD3 (POLD3 Products)
Background:	In DNA replication, exonucleases are involved in the processing of Okazaki fragments, whereas in DNA repair, they function to excise damaged DNA fragments and correct recombinational mismatches. These exonucleases include the family of DNA polymerases, namely DNA pol alpha, beta, delta and epsilon. DNA pol delta and DNA pol epsilon are multisubunit enzymes, with DNA pol delta consisting of two subunits which interact with the sliding DNA clamp protein

Target Details

PCNA.

UniProt: [Q9EQ28](#)

Pathways: [Telomere Maintenance](#), [DNA Damage Repair](#), [DNA Replication](#), [Synthesis of DNA](#)

Application Details

Application Notes: IHC/IF (M,R) 1:400-1:1000/1:400-1:1200

Restrictions: For Research Use only

Handling

Format: Liquid

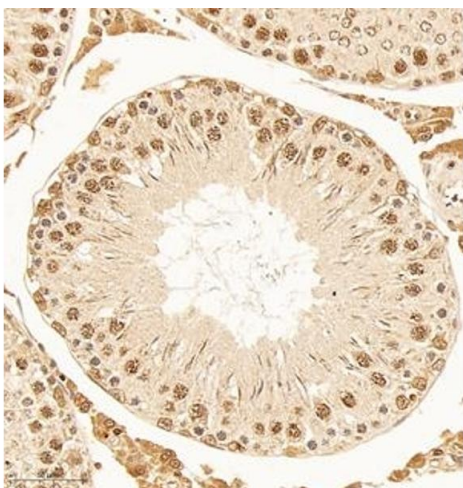
Buffer: PBS, pH 7.4, 0.02 % sodium azide

Preservative: Sodium azide

Precaution of Use: This product contains Sodium azide: a POISONOUS AND HAZARDOUS SUBSTANCE which should be handled by trained staff only.

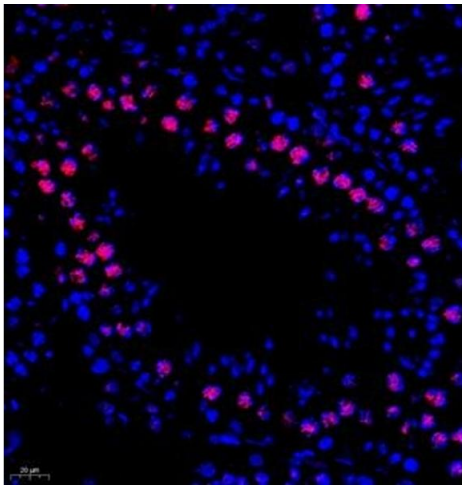
Storage: -20 °C

Images



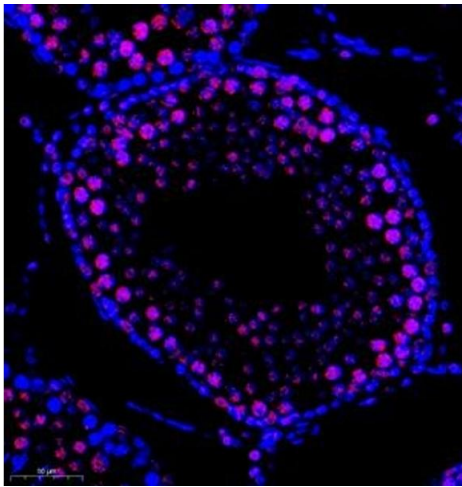
Immunohistochemistry (Paraffin-embedded Sections)

Image 1. Immunohistochemistry of paraffin embedded rat testis using DNApoldelta3 (ABIN7075130) at dilution of 1:1000 (300x lens)



Immunofluorescence (Paraffin-embedded Sections)

Image 2. Immunofluorescence of paraffin embedded mouse testis using DNApoldelta3 (ABIN7075130) at dilution of 1:650 (400x lens)



Immunofluorescence (Paraffin-embedded Sections)

Image 3. Immunofluorescence of paraffin embedded rat testis using DNApoldelta3 (ABIN7075130) at dilution of 1:1000 (300x lens)

Please check the [product details page](#) for more images. Overall 4 images are available for ABIN7075130.