

Datasheet for ABIN7075147

## anti-KCTD19 antibody

### 4 Images



[Go to Product page](#)

### Overview

Quantity:	100 µL
Target:	KCTD19
Reactivity:	Human, Mouse, Rat
Host:	Rabbit
Clonality:	Polyclonal
Conjugate:	This KCTD19 antibody is un-conjugated
Application:	Western Blotting (WB), Immunohistochemistry (IHC), Immunofluorescence (IF)

### Product Details

Immunogen:	Recombinant protein corresponding to Mouse KCTD19
Cross-Reactivity:	Human, Rat
Purification:	Affinity purification

### Target Details

Target:	KCTD19
Alternative Name:	KCTD19 ( <a href="#">KCTD19 Products</a> )
Molecular Weight:	105 kDa
Gene ID:	279499
NCBI Accession:	<a href="#">NP_001288102</a>
UniProt:	<a href="#">Q562E2</a>

## Application Details

Application Notes: WB (M,R) 1:500-1:1000, IHC/IF (H) 1:500-1:1000

Restrictions: For Research Use only

## Handling

Format: Liquid

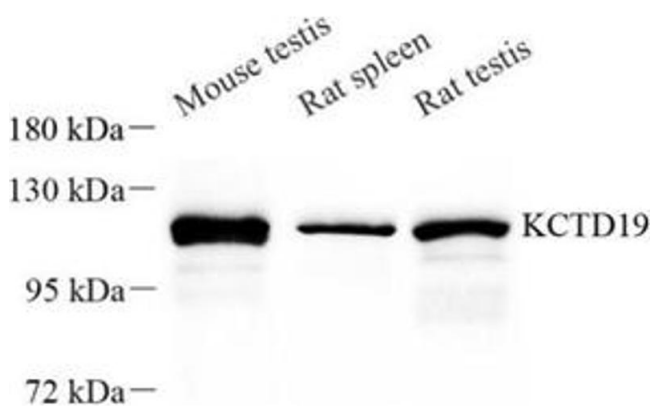
Buffer: PBS, pH 7.4, 0.02 % sodium azide

Preservative: Sodium azide

Precaution of Use: This product contains Sodium azide: a POISONOUS AND HAZARDOUS SUBSTANCE which should be handled by trained staff only.

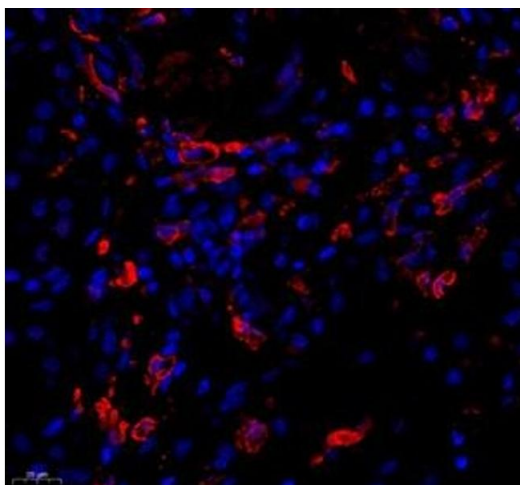
Storage: -20 °C

## Images



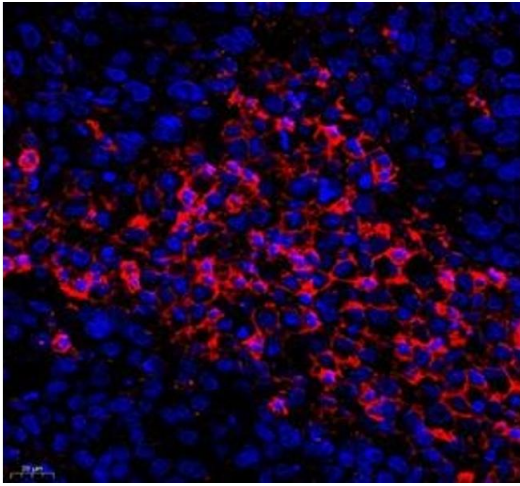
### Western Blotting

**Image 1.** Western blot analysis of KCTD19 (ABIN7075147) at dilution of 1: 50



### Immunofluorescence (Paraffin-embedded Sections)

**Image 2.** Immunofluorescence of paraffin embedded human kidney using KCTD19 (ABIN7075147) at dilution of 1: 500 (450x lens)



### Immunofluorescence (Paraffin-embedded Sections)

**Image 3.** Immunofluorescence of paraffin embedded human ovarian cancer using KCTD19 (ABIN7075147) at dilution of 1: 500 (400x lens)

Please check the [product details page](#) for more images. Overall 4 images are available for ABIN7075147.