

Datasheet for ABIN7075152

anti-KCNJ5 antibody[Go to Product page](#)**1** Image

Overview

Quantity:	100 µL
Target:	KCNJ5
Reactivity:	Rat
Host:	Rabbit
Clonality:	Polyclonal
Conjugate:	This KCNJ5 antibody is un-conjugated
Application:	Immunofluorescence (IF), Immunohistochemistry (IHC)

Product Details

Immunogen:	KLH conjugated Synthetic peptide corresponding to Mouse KCNJ5
Cross-Reactivity:	Rat
Purification:	Affinity purification

Target Details

Target:	KCNJ5
Alternative Name:	KCNJ5 (KCNJ5 Products)
Background:	<p>This potassium channel is controlled by G proteins. Inward rectifier potassium channels are characterized by a greater tendency to allow potassium to flow into the cell rather than out of it. Their voltage dependence is regulated by the concentration of extracellular potassium, as external potassium is raised, the voltage range of the channel opening shifts to more positive voltages. The inward rectification is mainly due to the blockage of outward current by internal</p>

Target Details

magnesium. Can be blocked by external barium.

Gene ID: 16521

UniProt: [P48545](#)

Pathways: [Notch Signaling](#)

Application Details

Application Notes: IHC/IF (R) 1:400-1:800

Restrictions: For Research Use only

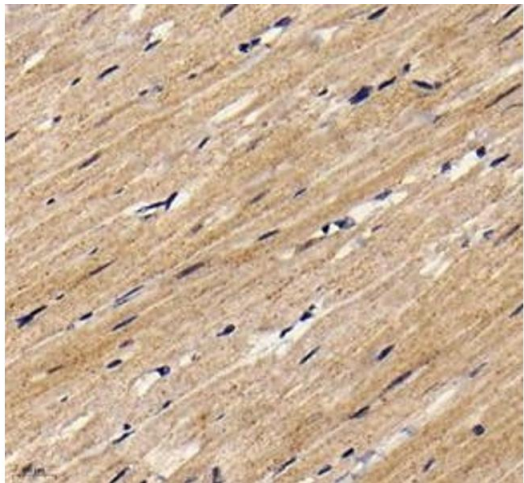
Handling

Buffer: , 0.02 % sodium azide

Preservative: Sodium azide

Precaution of Use: This product contains Sodium azide: a POISONOUS AND HAZARDOUS SUBSTANCE which should be handled by trained staff only.

Images



Immunohistochemistry (Paraffin-embedded Sections)

Image 1. Immunohistochemistry analysis of paraffin embedded rat heart using KCNJ5 (ABIN7075152) at dilution of 1: 800