

Datasheet for ABIN7075209

**anti-PTGFR antibody**

8 Images

[Go to Product page](#)

## Overview

Quantity:	100 µL
Target:	PTGFR
Reactivity:	Human, Rat
Host:	Rabbit
Clonality:	Polyclonal
Conjugate:	This PTGFR antibody is un-conjugated
Application:	Immunohistochemistry (IHC), Immunofluorescence (IF)

## Product Details

Immunogen:	KLH conjugated Synthetic peptide corresponding to Mouse Prostaglandin F2 alpha Receptor/PTGFR
Cross-Reactivity:	Human, Rat
Purification:	Affinity purification

## Target Details

Target:	PTGFR
Alternative Name:	Prostaglandin F2 alpha Receptor/PTGFR ( <a href="#">PTGFR Products</a> )
Background:	The protein encoded by this gene is member of the G-protein coupled receptor family. This protein is a receptor for prostaglandin F2-alpha (PGF2-alpha), which is known to be a potent luteolytic agent, and may also be involved in modulating intraocular pressure and smooth muscle contraction in uterus. Knockout studies in mice suggest that the interaction of PGF2-

## Target Details

alpha with this receptor may initiate parturition in ovarian luteal cells and thus induce luteolysis.  
Two transcript variants encoding different isoforms have been found for this gene.

Gene ID: 19220

NCBI Accession: [NP\\_032992](#)

UniProt: [P43117](#)

## Application Details

Application Notes: IHC/IF (H,R) 1:400-1:800/1:400-1:800

Restrictions: For Research Use only

## Handling

Format: Liquid

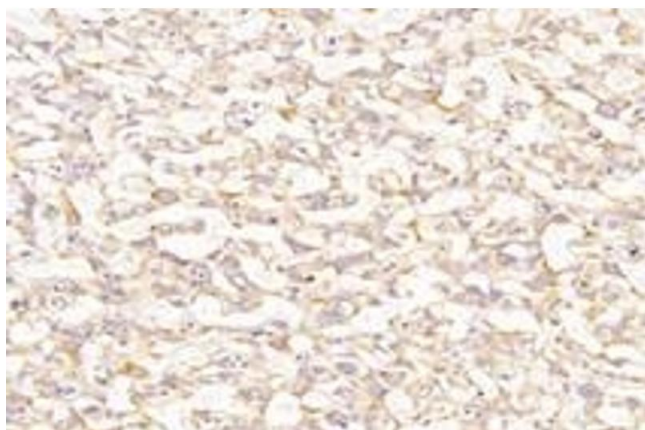
Buffer: PBS, pH 7.4, 0.02 % sodium azide

Preservative: Sodium azide

Precaution of Use: This product contains Sodium azide: a POISONOUS AND HAZARDOUS SUBSTANCE which should be handled by trained staff only.

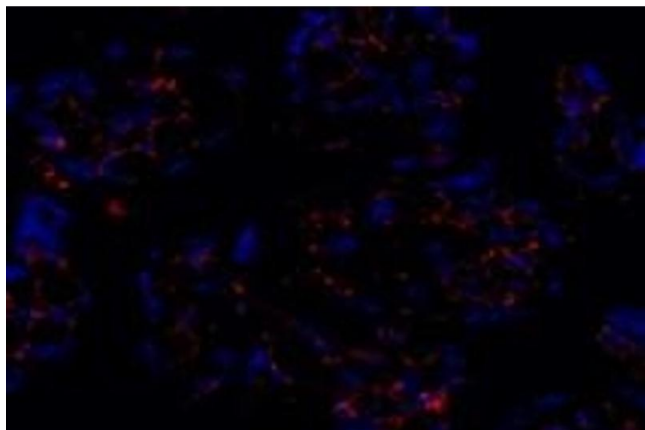
Storage: -20 °C

## Images



### Immunohistochemistry (Paraffin-embedded Sections)

**Image 1.** Immunohistochemistry analysis of paraffin-embedded rat placenta using PTGFR (ABIN7075209) at dilution of 1: 800



### Immunofluorescence (fixed cells)

**Image 2.** Immunofluorescent analysis of paraformaldehyde-fixed human placenta using PTGFR (ABIN7075209) at dilution of 1: 800



### Immunofluorescence (fixed cells)

**Image 3.** Immunofluorescent analysis of paraformaldehyde-fixed rat heart using PTGFR (ABIN7075209) at dilution of 1: 800

Please check the [product details page](#) for more images. Overall 8 images are available for ABIN7075209.