



## Datasheet for ABIN7075228 anti-PSMB11 antibody



[Go to Product page](#)

### 1 Image

#### Overview

Quantity:	100 µL
Target:	PSMB11
Reactivity:	Mouse, Rat
Host:	Rabbit
Clonality:	Polyclonal
Application:	Western Blotting (WB)

#### Product Details

Immunogen:	Recombinant protein corresponding to Mouse PSMB11
Cross-Reactivity:	Rat
Purification:	Affinity purification

#### Target Details

Target:	PSMB11
Alternative Name:	PSMB11 ( <a href="#">PSMB11 Products</a> )
Background:	PSMB11 belongs to the peptidase T1B family. It is a multicatalytic proteinase complex which is characterized by its ability to cleave peptides with Arg, Phe, Tyr, Leu, and Glu adjacent to the leaving group at neutral or slightly basic pH . PSMB11 has an ATP-dependent proteolytic activity. Incorporated instead of PSMB5 or PSMB8, this unit reduces the chymotrypsin-like activity of the proteasome. It plays a pivotal role in development of CD8-positive T cells. The antibody is specific to PSMB11.

## Target Details

Molecular Weight:	33 kDa
Gene ID:	73902
NCBI Accession:	<a href="#">NP_780413</a>
UniProt:	<a href="#">Q8BG41</a>

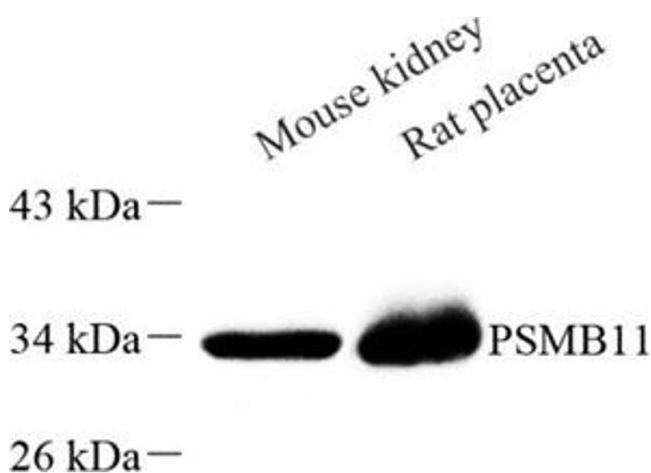
## Application Details

Application Notes:	WB (M,R) 1:500- 1:1000
Restrictions:	For Research Use only

## Handling

Format:	Liquid
Buffer:	PBS, pH 7.4, 0.02 % sodium azide
Preservative:	Sodium azide
Precaution of Use:	This product contains Sodium azide: a POISONOUS AND HAZARDOUS SUBSTANCE which should be handled by trained staff only.
Storage:	-20 °C

## Images



### Western Blotting

**Image 1.** Western blot analysis of PSMB11 (ABIN7075228) at dilution of 1: 1000