

Datasheet for ABIN7075269
anti-PPP1R14B antibody



[Go to Product page](#)

2 Images

Overview

| | |
|--------------|--|
| Quantity: | 100 µL |
| Target: | PPP1R14B |
| Reactivity: | Human, Rat |
| Host: | Rabbit |
| Clonality: | Polyclonal |
| Conjugate: | This PPP1R14B antibody is un-conjugated |
| Application: | Western Blotting (WB), Immunohistochemistry (IHC), Immunofluorescence (IF) |

Product Details

| | |
|-------------------|---|
| Immunogen: | Recombinant protein corresponding to Mouse PPP1R14B/PNG |
| Cross-Reactivity: | Human |
| Purification: | Affinity purification |

Target Details

| | |
|-------------------|---|
| Target: | PPP1R14B |
| Alternative Name: | PPP1R14B/PNG (PPP1R14B Products) |
| Background: | Inhibitor of PPP1CA. Has over 50-fold higher inhibitory activity when phosphorylated. |
| Molecular Weight: | 23 kDa |
| Gene ID: | 18938 |
| UniProt: | Q62084 |

Application Details

Application Notes: WB (H) 1:300-1:1000, IHC/IF (R) 1:1600-1:3200

Restrictions: For Research Use only

Handling

Format: Liquid

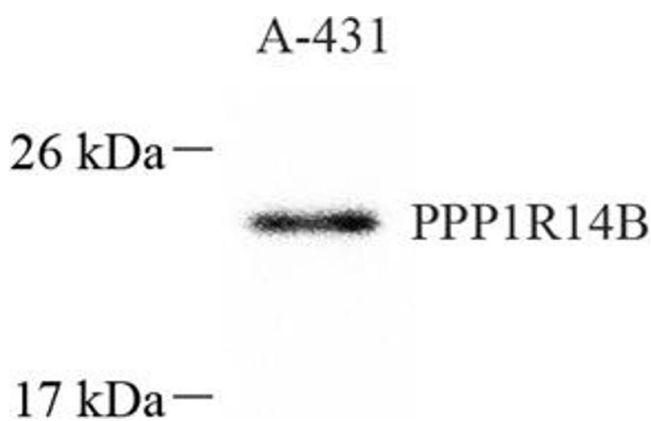
Buffer: PBS, pH 7.4, 0.02 % sodium azide

Preservative: Sodium azide

Precaution of Use: This product contains Sodium azide: a POISONOUS AND HAZARDOUS SUBSTANCE which should be handled by trained staff only.

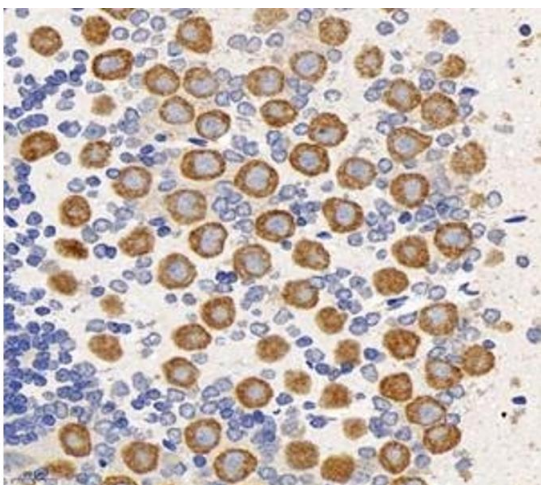
Storage: -20 °C

Images



Western Blotting

Image 1. Western blot analysis of PNG (ABIN7075269), at dilution of 1: 1000



Immunohistochemistry (Paraffin-embedded Sections)

Image 2. Immunohistochemistry analysis of paraffin-embedded rat cerebellum using PNG (ABIN7075269) at dilution of 1: 3200