

Datasheet for ABIN7075274
anti-PPP2R2A antibody[Go to Product page](#)

2 Images

Overview

Quantity:	100 µL
Target:	PPP2R2A
Reactivity:	Mouse, Rat
Host:	Rabbit
Clonality:	Polyclonal
Conjugate:	This PPP2R2A antibody is un-conjugated
Application:	Immunohistochemistry (IHC), Immunofluorescence (IF)

Product Details

Immunogen:	Recombinant protein corresponding to Mouse PPP2R2A
Cross-Reactivity:	Rat
Purification:	Affinity purification

Target Details

Target:	PPP2R2A
Alternative Name:	PPP2R2A (PPP2R2A Products)
Background:	Serine/threonine-protein phosphatase 2A 55 kDa regulatory subunit B alpha isoform is an enzyme belongs to the phosphatase 2 regulatory subunit B family. Protein phosphatase 2 is one of the four major Ser/Thr phosphatases, and it is implicated in the negative control of cell growth and division. It consists of a common heteromeric core enzyme, which is composed of a catalytic subunit and a constant regulatory subunit, that associates with a variety of

Target Details

regulatory subunits. The B regulatory subunit might modulate substrate selectivity and catalytic activity. This gene encodes an alpha isoform of the regulatory subunit B55 subfamily.

Gene ID: 71978

NCBI Accession: [NP_001192117](#)

UniProt: [Q6P1F6](#)

Pathways: [Mitotic G1-G1/S Phases](#), [Hepatitis C](#)

Application Details

Application Notes: IHC/IF (M,R) 1:1000-1:2000/1:500-1:1000

Restrictions: For Research Use only

Handling

Format: Liquid

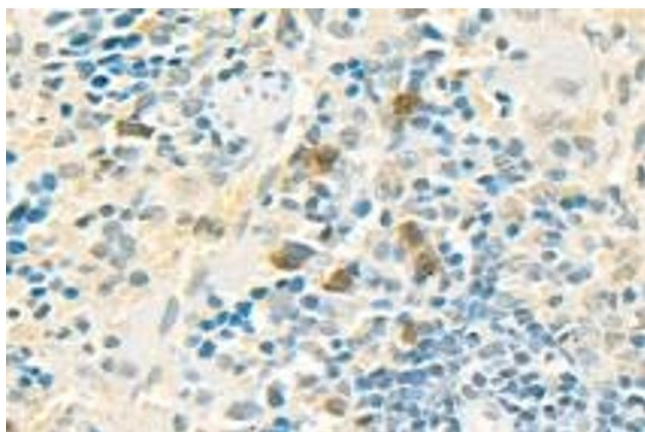
Buffer: PBS, pH 7.4, 0.02 % sodium azide

Preservative: Sodium azide

Precaution of Use: This product contains Sodium azide: a POISONOUS AND HAZARDOUS SUBSTANCE which should be handled by trained staff only.

Storage: -20 °C

Images



Immunohistochemistry (Paraffin-embedded Sections)

Image 1. Immunohistochemistry analysis of paraffin-embedded mouse spleen using PPP2R2A (ABIN7075274) at dilution of 1: 2000



Immunohistochemistry (Paraffin-embedded Sections)

Image 2. Immunohistochemistry analysis of paraffin-embedded mouse hippocampus using PPP2R2A (ABIN7075274) at dilution of 1: 2000