



Datasheet for ABIN7075277 anti-PPP2R2D antibody



[Go to Product page](#)

1 Image

Overview

Quantity:	100 µL
Target:	PPP2R2D
Reactivity:	Human, Mouse, Rat
Host:	Rabbit
Clonality:	Polyclonal
Conjugate:	This PPP2R2D antibody is un-conjugated
Application:	Western Blotting (WB)

Product Details

Immunogen:	Recombinant protein corresponding to Mouse PPP2R2D
Cross-Reactivity:	Human, Rat
Purification:	Affinity purification

Target Details

Target:	PPP2R2D
Alternative Name:	PPP2R2D (PPP2R2D Products)
Background:	B regulatory subunit of protein phosphatase 2A (PP2A) that plays a key role in cell cycle by controlling mitosis entry and exit. The activity of PP2A complexes containing PPP2R2D (PR55-delta) fluctuate during the cell cycle: the activity is high in interphase and low in mitosis. During mitosis, activity of PP2A is inhibited via interaction with phosphorylated ENSA and ARPP19 inhibitors. Within the PP2A complexes, the B regulatory subunits modulate substrate selectivity

Target Details

and catalytic activity, and also may direct the localization of the catalytic enzyme to a particular subcellular compartment .

Molecular Weight: 52 kDa

Gene ID: 52432

NCBI Accession: [NP_080667](#)

UniProt: [Q925E7](#)

Application Details

Application Notes: WB (H,M,R) 1: 1000-1: 2000

Restrictions: For Research Use only

Handling

Format: Liquid

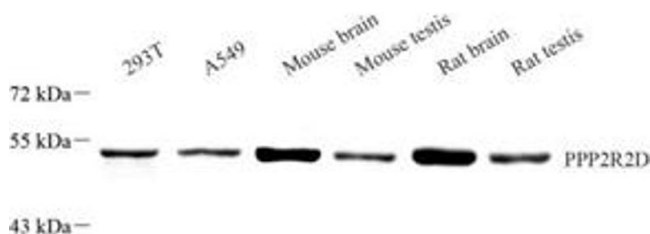
Buffer: PBS, pH 7.4, 0.02 % sodium azide

Preservative: Sodium azide

Precaution of Use: This product contains Sodium azide: a POISONOUS AND HAZARDOUS SUBSTANCE which should be handled by trained staff only.

Storage: -20 °C

Images



Western Blotting

Image 1. Western blot analysis of PPP2R2D (ABIN7075277) at dilution of 1: 2000