



Datasheet for ABIN7075292 anti-PTPN12 antibody



[Go to Product page](#)

14 Images

Overview

Quantity:	100 µL
Target:	PTPN12
Reactivity:	Human, Mouse, Rat
Host:	Rabbit
Clonality:	Polyclonal
Conjugate:	This PTPN12 antibody is un-conjugated
Application:	Western Blotting (WB), Immunohistochemistry (IHC), Immunofluorescence (IF)

Product Details

Immunogen:	KLH conjugated Synthetic peptide corresponding to Mouse PTPN12
Cross-Reactivity:	Human, Rat
Purification:	Affinity purification

Target Details

Target:	PTPN12
Alternative Name:	PTPN12 (PTPN12 Products)
Background:	<p>The PTPN12 is a member of the protein tyrosine phosphatase (PTP) family. PTPs are signaling molecules that regulate a variety of cellular processes including cell growth, differentiation, mitotic cycle, and oncogenic transformation. This PTP contains a C-terminal PEST motif, which serves as a protein-protein interaction domain, and may regulate protein intracellular half-life.</p> <p>This PTP was found to bind and dephosphorylate the product of the oncogene c-ABL and thus</p>

Target Details

may play a role in oncogenesis. The PTP was also shown to interact with, and dephosphorylate, various products related to cytoskeletal structure and cell adhesion. This suggests it has a regulatory role in controlling cell shape and mobility.

Molecular Weight: 110 kDa

Gene ID: 19248

NCBI Accession: [NP_035333](#)

UniProt: [P35831](#)

Application Details

Application Notes: WB (H,M,R) 1: 500-1: 800, IHC/IF (H,M,R) 1:1000-1:3000/1:500-1:2000

Restrictions: For Research Use only

Handling

Format: Liquid

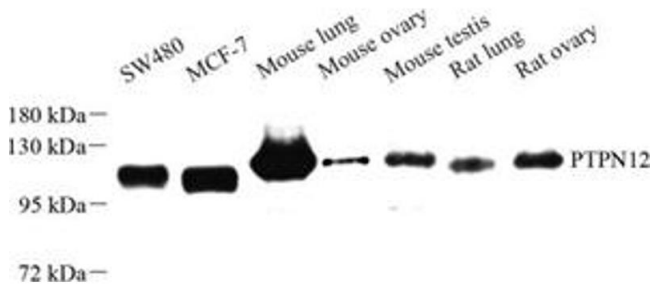
Buffer: PBS, pH 7.4, 0.02 % sodium azide

Preservative: Sodium azide

Precaution of Use: This product contains Sodium azide: a POISONOUS AND HAZARDOUS SUBSTANCE which should be handled by trained staff only.

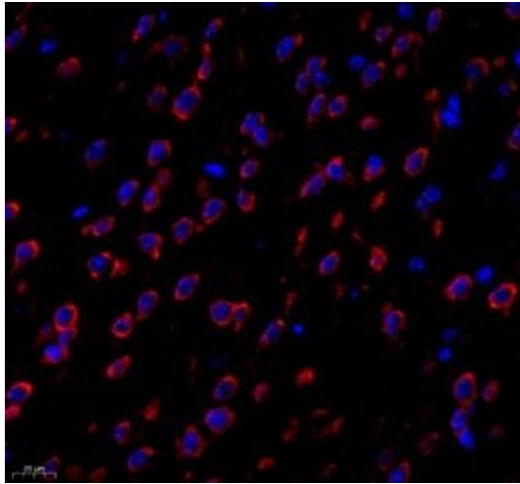
Storage: -20 °C

Images



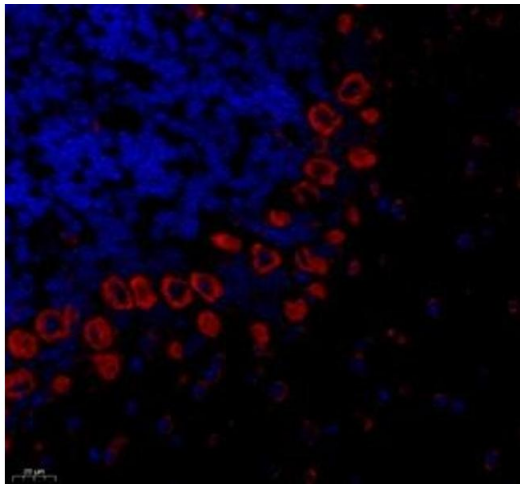
Western Blotting

Image 1. Western blot analysis of PTPN12 (ABIN7075292) at dilution of 1: 500



Immunofluorescence (Paraffin-embedded Sections)

Image 2. Immunofluorescence of paraffin embedded mouse brain using PTPN12 (ABIN7075292) at dilution of 1: 1000 (400x lens)



Immunofluorescence (Paraffin-embedded Sections)

Image 3. Immunofluorescence of paraffin embedded mouse cerebellum using PTPN12 (ABIN7075292) at dilution of 1: 1000 (400x lens)

Please check the [product details page](#) for more images. Overall 14 images are available for ABIN7075292.