

Datasheet for ABIN707531
anti-CUEDC2 antibody (AA 201-287)[Go to Product page](#)

3 Images

Overview

Quantity:	100 µL
Target:	CUEDC2
Binding Specificity:	AA 201-287
Reactivity:	Mouse
Host:	Rabbit
Clonality:	Polyclonal
Conjugate:	This CUEDC2 antibody is un-conjugated
Application:	Western Blotting (WB), ELISA, Immunohistochemistry (Paraffin-embedded Sections) (IHC (p)), Immunofluorescence (Cultured Cells) (IF (cc)), Immunofluorescence (Paraffin-embedded Sections) (IF (p)), Immunohistochemistry (Frozen Sections) (IHC (fro))

Product Details

Immunogen:	KLH conjugated synthetic peptide derived from human CUE domain containing 2
Isotype:	IgG
Cross-Reactivity:	Mouse
Predicted Reactivity:	Human,Rat,Dog,Cow,Pig,Horse,Rabbit
Purification:	Purified by Protein A.

Target Details

Target:	CUEDC2
---------	--------

Target Details

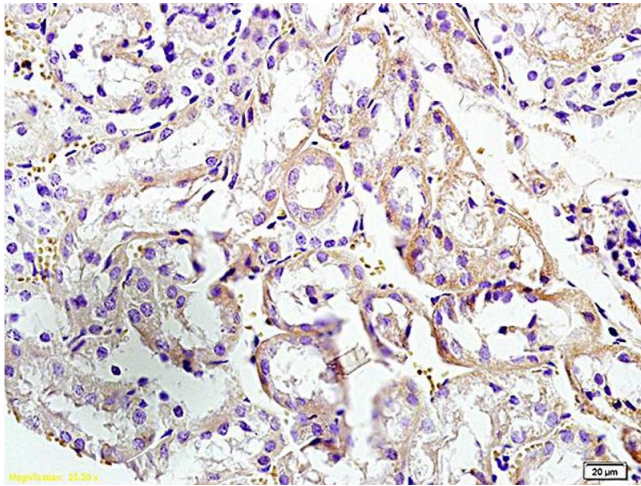
Alternative Name:	CUEDC2 (CUEDC2 Products)
Background:	Synonyms: C10orf66, bA18I14.5, CUE domain-containing protein 2, CUEDC2, HOYS6 Background: Down-regulates ESR1 protein levels through the ubiquitination-proteasome pathway, regardless of the presence of 17 beta-estradiol. Also involved in 17 beta-estradiol-induced ESR1 degradation. Controls PGR protein levels through a similar mechanism.
Gene ID:	79004
UniProt:	Q9H467

Application Details

Application Notes:	WB 1:300-5000 ELISA 1:500-1000 IHC-P 1:200-400 IHC-F 1:100-500 IF(IHC-P) 1:50-200 IF(IHC-F) 1:50-200 IF(ICC) 1:50-200
Restrictions:	For Research Use only

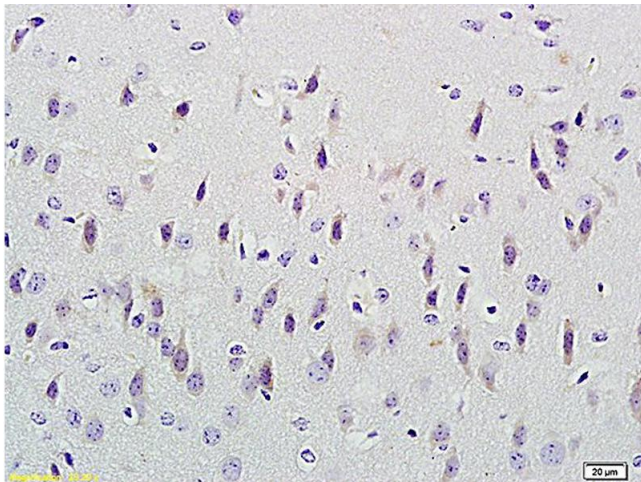
Handling

Format:	Liquid
Concentration:	1 µg/µL
Buffer:	0.01M TBS(pH 7.4) with 1 % BSA, 0.02 % Proclin300 and 50 % Glycerol.
Preservative:	ProClin
Precaution of Use:	This product contains ProClin: a POISONOUS AND HAZARDOUS SUBSTANCE, which should be handled by trained staff only.
Storage:	4 °C,-20 °C
Storage Comment:	Shipped at 4°C. Store at -20°C for one year. Avoid repeated freeze/thaw cycles.
Expiry Date:	12 months



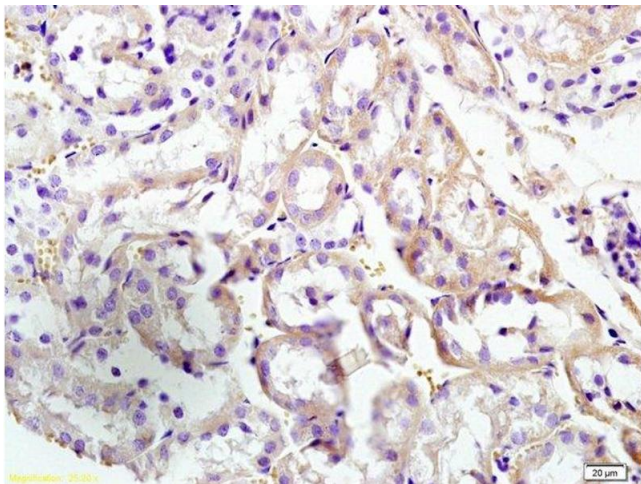
Immunohistochemistry

Image 1. Formalin-fixed and paraffin embedded mouse brain labeled with Anti-CUEDC2/CUE domain containing 2 Polyclonal Antibody, Unconjugated (ABIN707531) at 1:4000 followed by conjugation to the secondary antibody and DAB staining



Immunohistochemistry

Image 2. Formalin-fixed and paraffin embedded mouse kidney labeled with Anti-CUEDC2/CUE domain containing 2 Polyclonal Antibody, Unconjugated (ABIN707531) at 1:300 followed by conjugation to the secondary antibody and DAB staining



Immunohistochemistry (Paraffin-embedded Sections)

Image 3. Formalin-fixed and paraffin embedded mouse kidney labeled with Anti-CUEDC2/CUE domain containing 2 Polyclonal Antibody, Unconjugated at 1:300 followed by conjugation to the secondary antibody and DAB staining