

Datasheet for ABIN7075437

anti-RPL3L antibody[Go to Product page](#)**1** Image

Overview

Quantity:	100 µL
Target:	RPL3L
Reactivity:	Human
Host:	Rabbit
Clonality:	Polyclonal
Conjugate:	This RPL3L antibody is un-conjugated
Application:	Western Blotting (WB)

Product Details

Immunogen:	Recombinant protein corresponding to Human RPL3L
Purification:	Affinity purification

Target Details

Target:	RPL3L
Alternative Name:	RPL3L (RPL3L Products)
Background:	<p>This gene encodes a protein that shares sequence similarity with ribosomal protein L3. The protein belongs to the L3P family of ribosomal proteins. Unlike the ubiquitous expression of ribosomal protein genes, this gene has a tissue-specific pattern of expression, with the highest levels of expression in skeletal muscle and heart. It is not currently known whether the encoded protein is a functional ribosomal protein or whether it has evolved a function that is independent of the ribosome.</p>

Target Details

Molecular Weight:	46 kDa
Gene ID:	6123
NCBI Accession:	NP_005052
UniProt:	Q92901

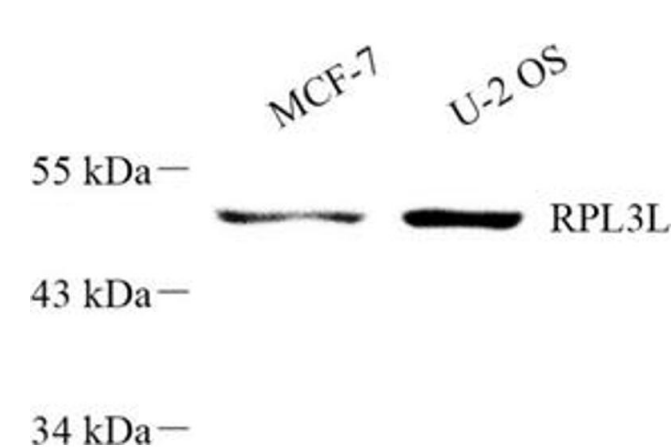
Application Details

Application Notes:	WB (H) 1:300-1:600
Restrictions:	For Research Use only

Handling

Format:	Liquid
Buffer:	PBS, pH 7.4, 0.02 % sodium azide
Preservative:	Sodium azide
Precaution of Use:	This product contains Sodium azide: a POISONOUS AND HAZARDOUS SUBSTANCE which should be handled by trained staff only.
Storage:	-20 °C

Images



Western Blotting

Image 1. Western blot analysis of RPL3L (ABIN7075437) at dilution of 1: 300