



[Go to Product page](#)

Datasheet for ABIN7075508
anti-Sarcalumenin antibody

1 Image

Overview

Quantity:	100 µL
Target:	Sarcalumenin (SRL)
Reactivity:	Mouse, Rat
Host:	Rabbit
Clonality:	Polyclonal
Conjugate:	This Sarcalumenin antibody is un-conjugated
Application:	Western Blotting (WB)

Product Details

Immunogen:	Recombinant protein corresponding to Mouse Sarcalumenin
Cross-Reactivity:	Rat
Purification:	Affinity purification

Target Details

Target:	Sarcalumenin (SRL)
Alternative Name:	Sarcalumenin (SRL Products)
Background:	This gene may be involved in the regulation of calcium transport.
Molecular Weight:	53 kDa
Gene ID:	106393
NCBI Accession:	NP_001334091

Target Details

UniProt: [Q7TQ48](#)

Application Details

Application Notes: WB (M,R) 1:500-1:1000

Restrictions: For Research Use only

Handling

Format: Liquid

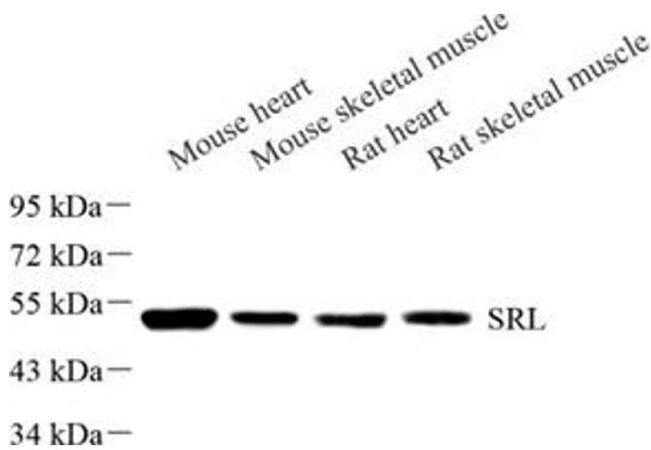
Buffer: PBS, pH 7.4, 0.02 % sodium azide

Preservative: Sodium azide

Precaution of Use: This product contains Sodium azide: a POISONOUS AND HAZARDOUS SUBSTANCE which should be handled by trained staff only.

Storage: -20 °C

Images



Western Blotting

Image 1. Western blot analysis of Srl (ABIN7075508) at dilution of 1: 500