

Datasheet for ABIN7075521  
**anti-Sec23 Homolog B antibody**

## 3 Images

[Go to Product page](#)

## Overview

Quantity:	100 µL
Target:	Sec23 Homolog B (SEC23B)
Reactivity:	Mouse, Rat
Host:	Rabbit
Clonality:	Polyclonal
Conjugate:	This Sec23 Homolog B antibody is un-conjugated
Application:	Immunofluorescence (IF), Immunohistochemistry (IHC)

## Product Details

Immunogen:	Recombinant protein corresponding to Mouse SEC23B
Cross-Reactivity:	Rat
Purification:	Affinity purification

## Target Details

Target:	Sec23 Homolog B (SEC23B)
Alternative Name:	SEC23B ( <a href="#">SEC23B Products</a> )
Background:	The protein encoded by this gene is a member of the SEC23 subfamily of the SEC23/SEC24 family, which is involved in vesicle trafficking. The encoded protein has similarity to yeast Sec23p component of COPII. COPII is the coat protein complex responsible for vesicle budding from the ER. The function of this gene product has been implicated in cargo selection and concentration. Multiple alternatively spliced transcript variants encoding the same protein have

## Target Details

been found for this gene.

Gene ID: 27054

NCBI Accession: [NP\\_001239472](#)

UniProt: [Q9D662](#)

## Application Details

Application Notes: IHC/IF (M,R) 1:650-1:1300/1:650-1:1300

Restrictions: For Research Use only

## Handling

Format: Liquid

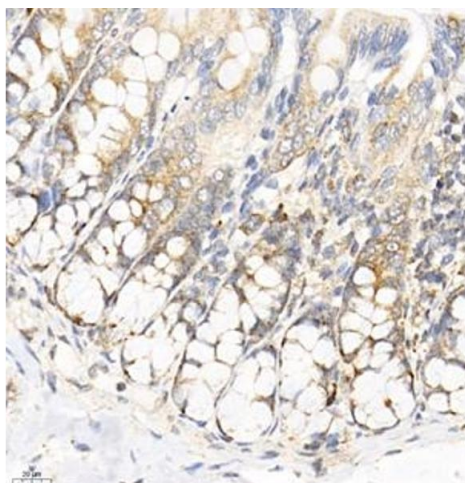
Buffer: PBS, pH 7.4, 0.02 % sodium azide

Preservative: Sodium azide

Precaution of Use: This product contains Sodium azide: a POISONOUS AND HAZARDOUS SUBSTANCE which should be handled by trained staff only.

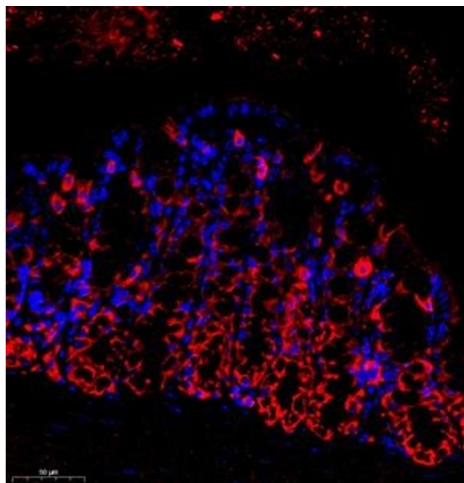
Storage: -20 °C

## Images



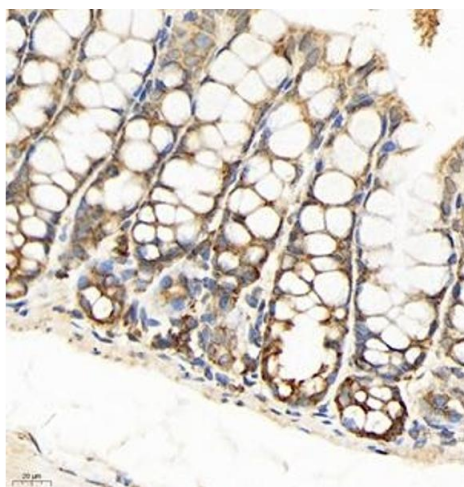
### Immunohistochemistry (Paraffin-embedded Sections)

**Image 1.** Immunohistochemistry of paraffin embedded rat colon using SEC238 (ABIN7075521) at dilution of 1:650 (400x lens)



#### Immunofluorescence (Paraffin-embedded Sections)

**Image 2.** Immunofluorescence of paraffin embedded mouse colon using SEC238 (ABIN7075521) at dilution of 1:650 (300x lens)



#### Immunohistochemistry (Paraffin-embedded Sections)

**Image 3.** Immunohistochemistry of paraffin embedded mouse colon using SEC238 (ABIN7075521) at dilution of 1:650 (400x lens)