



[Go to Product page](#)

Datasheet for ABIN7075546

anti-SCPEP1 antibody

3 Images

Overview

Quantity:	100 µL
Target:	SCPEP1
Reactivity:	Mouse, Rat
Host:	Rabbit
Clonality:	Polyclonal
Application:	Immunohistochemistry (IHC), Immunofluorescence (IF)

Product Details

Immunogen:	Recombinant protein corresponding to Mouse RISC
Cross-Reactivity:	Rat
Purification:	Affinity purification

Target Details

Target:	SCPEP1
Alternative Name:	RISC (SCPEP1 Products)
Background:	Vascular smooth muscle activation is a salient feature of several pathological conditions including atherosclerosis, hypertension, vein graft failure, restenosis, and transplant arteriopathy. Several new genes whose proteins could lead to such biological effects have been identified. One such protein is RISC. Tissue expression pattern of Retinoid-inducible serine carboxypeptidase (RISC) in human revealed that it was highly expressed in kidney and heart.
Gene ID:	74617

Target Details

NCBI Accession: [NP_083299](#)

UniProt: [Q920A5](#)

Application Details

Application Notes: IHC/IF (M,R) 1:2000-1:4000

Restrictions: For Research Use only

Handling

Format: Liquid

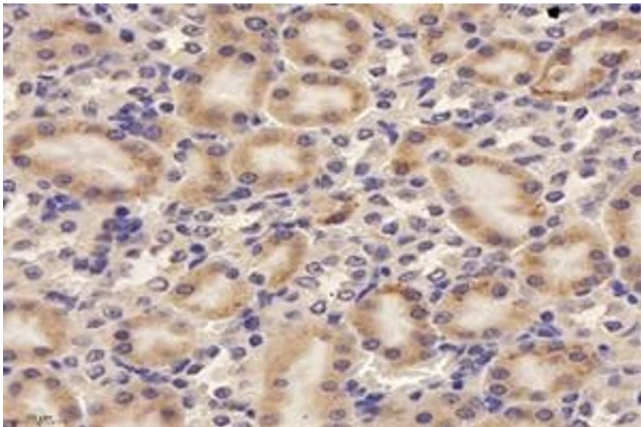
Buffer: PBS, pH 7.4, 0.02 % sodium azide

Preservative: Sodium azide

Precaution of Use: This product contains Sodium azide: a POISONOUS AND HAZARDOUS SUBSTANCE which should be handled by trained staff only.

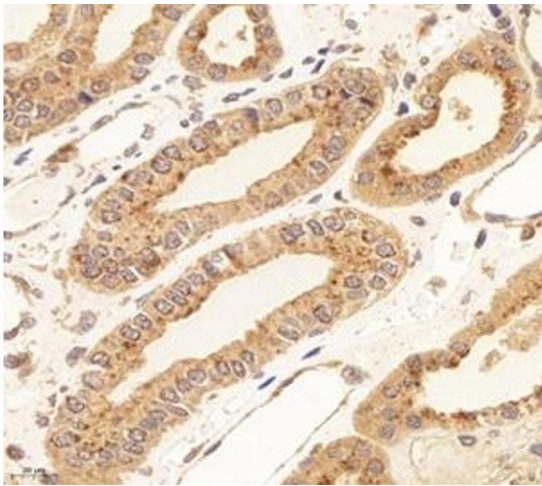
Storage: -20 °C

Images



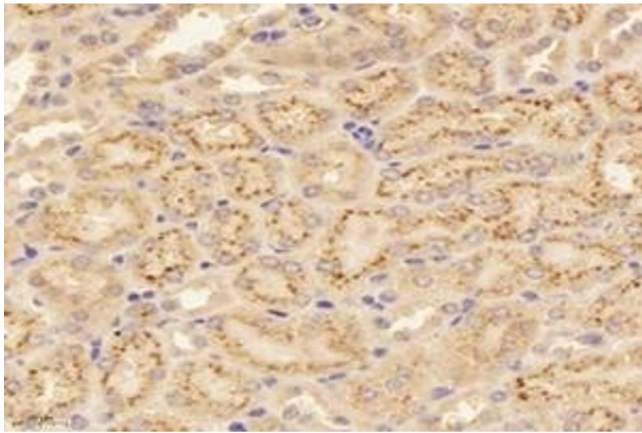
Immunohistochemistry (Paraffin-embedded Sections)

Image 1. Immunohistochemistry analysis of paraffin-embedded rat kidney using RISC (ABIN7075546) at dilution of 1: 4000



Immunohistochemistry (Paraffin-embedded Sections)

Image 2. Immunohistochemistry analysis of paraffin-embedded human kidney using, RISC (ABIN7075546) at dilution of 1: 4000



Immunohistochemistry (Paraffin-embedded Sections)

Image 3. Immunohistochemistry analysis of paraffin-embedded mouse kidney using, RISC (ABIN7075546) at dilution of 1: 4000