



[Go to Product page](#)

Datasheet for ABIN7075581 anti-SMYD2A antibody

5 Images

Overview

| | |
|--------------|---|
| Quantity: | 100 µL |
| Target: | SMYD2A |
| Reactivity: | Mouse, Rat |
| Host: | Rabbit |
| Clonality: | Polyclonal |
| Conjugate: | This SMYD2A antibody is un-conjugated |
| Application: | Immunohistochemistry (IHC), Immunofluorescence (IF) |

Product Details

| | |
|-------------------|--|
| Immunogen: | Recombinant protein corresponding to Mouse SMYD2 |
| Cross-Reactivity: | Rat |
| Purification: | Affinity purification |

Target Details

| | |
|-------------------|---|
| Target: | SMYD2A |
| Alternative Name: | KMT3C/SMYD2 (SMYD2A Products) |
| Background: | Protein-lysine N-methyltransferase that methylates both histones and non-histone proteins. Specifically methylates histone H3 'Lys-4' (H3K4me) and dimethylates histone H3 'Lys-36' (H3K36me2). Has also methyltransferase activity toward non-histone proteins such as p53/TP53 and RB1. Monomethylates 'Lys-370' of p53/TP53, leading to decreased DNA-binding activity and subsequent transcriptional regulation activity of p53/TP53. |

Target Details

Gene ID: 226830

NCBI Accession: [NP_081072](#)

UniProt: [Q8R5A0](#)

Application Details

Application Notes: IHC/IF (M,R) 1:1000-1:4000/1:1000-1:2000

Restrictions: For Research Use only

Handling

Format: Liquid

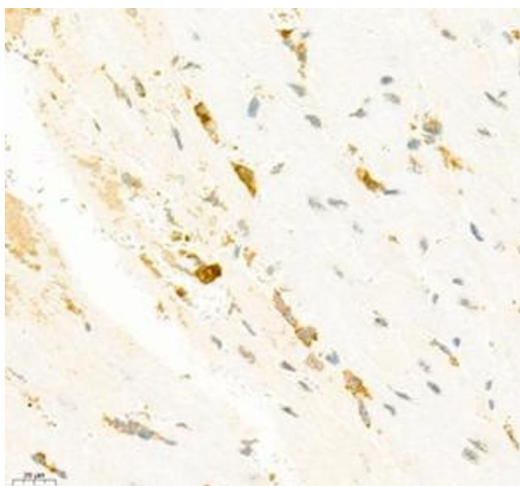
Buffer: PBS, pH 7.4, 0.02 % sodium azide

Preservative: Sodium azide

Precaution of Use: This product contains Sodium azide: a POISONOUS AND HAZARDOUS SUBSTANCE which should be handled by trained staff only.

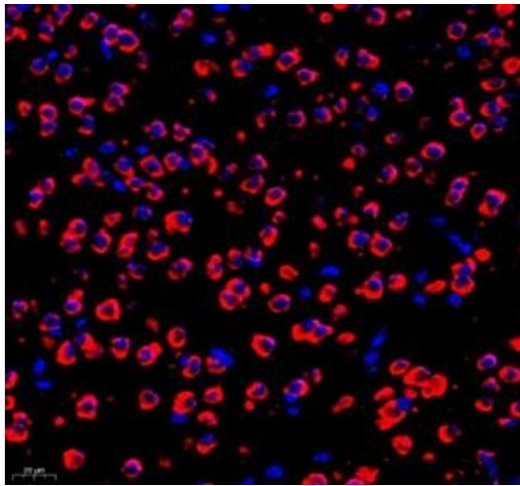
Storage: -20 °C

Images



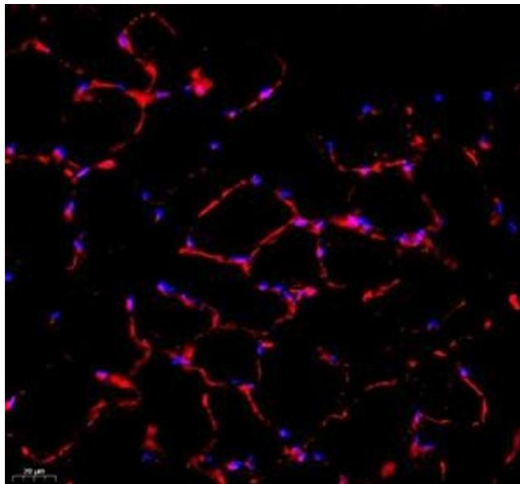
Immunohistochemistry (Paraffin-embedded Sections)

Image 1. Immunohistochemistry of paraffin embedded mouse heart using SMYD2 (ABIN7075581) at dilution of 1:2000 (400x lens)



Immunofluorescence (Paraffin-embedded Sections)

Image 2. Immunofluorescence of paraffin embedded mouse brain using SMYD2 (ABIN7075581) at dilution of 1:2000 (400x lens)



Immunofluorescence (Paraffin-embedded Sections)

Image 3. Immunofluorescence of paraffin embedded mouse Skeletal muscle using SMYD2 (ABIN7075581) at dilution of 1:1000 (400x lens)

Please check the [product details page](#) for more images. Overall 5 images are available for ABIN7075581.