

Datasheet for ABIN7075647

**anti-SCN8A antibody****3** Images[Go to Product page](#)

## Overview

Quantity:	100 µL
Target:	SCN8A
Reactivity:	Mouse, Rat
Host:	Rabbit
Clonality:	Polyclonal
Conjugate:	This SCN8A antibody is un-conjugated
Application:	Western Blotting (WB), Immunohistochemistry (IHC), Immunofluorescence (IF)

## Product Details

Immunogen:	KLH conjugated Synthetic peptide corresponding to Mouse Nav1.6/SCN8A
Cross-Reactivity:	Rat
Purification:	Affinity purification

## Target Details

Target:	SCN8A
Alternative Name:	Nav1.6/SCN8A ( <a href="#">SCN8A Products</a> )
Background:	This gene encodes a member of the sodium channel alpha subunit gene family. The encoded protein forms the ion pore region of the voltage-gated sodium channel. This protein is essential for the rapid membrane depolarization that occurs during the formation of the action potential in excitable neurons. Mutations in this gene are associated with cognitive disability, pancerebellar atrophy and ataxia. Alternate splicing results in multiple transcript variants.

## Target Details

Molecular Weight:	225 kDa
Gene ID:	20273
UniProt:	<a href="#">Q9WTU3</a>
Pathways:	<a href="#">Sensory Perception of Sound</a>

## Application Details

Application Notes:	WB (M) 1:300-1:600, IHC/IF (M,R) 1:600-1:1200
Restrictions:	For Research Use only

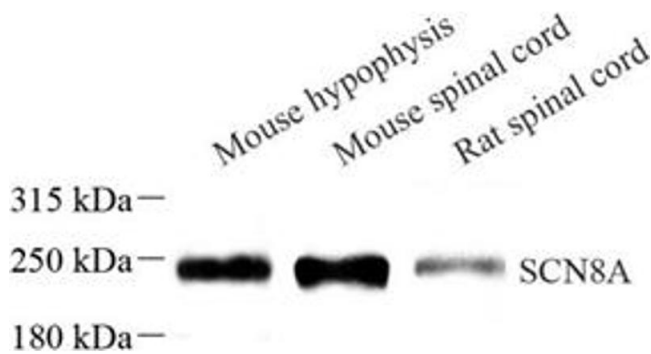
## Handling

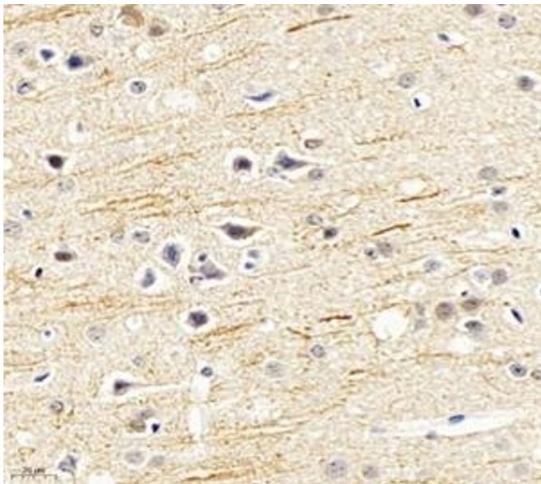
Format:	Liquid
Buffer:	PBS, pH 7.4, 0.02 % sodium azide
Preservative:	Sodium azide
Precaution of Use:	This product contains Sodium azide: a POISONOUS AND HAZARDOUS SUBSTANCE which should be handled by trained staff only.
Storage:	-20 °C

## Images

### Western Blotting

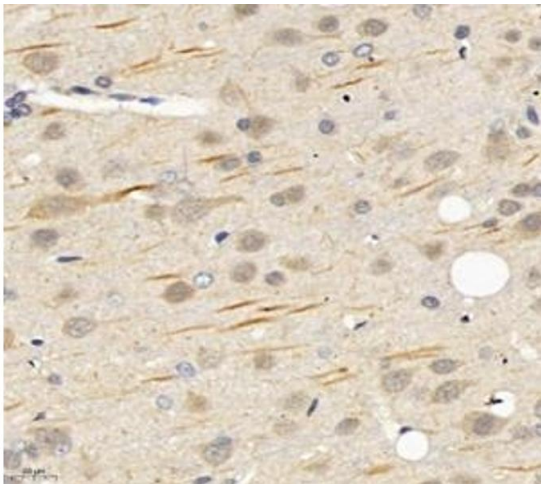
**Image 1.** Western blot analysis of SCN8A (ABIN7075647), at dilution of 1: 600





#### Immunohistochemistry (Paraffin-embedded Sections)

**Image 2.** Immunohistochemistry analysis of paraffin-embedded mouse hippocampus using SCN8A (ABIN7075647) at dilution of 1: 1200



#### Immunohistochemistry (Paraffin-embedded Sections)

**Image 3.** Immunohistochemistry analysis of paraffin-embedded rat brain using,SCN8A (ABIN7075647) at dilution of 1: 1200