



Datasheet for ABIN7075648  
**anti-SLC10A2 antibody**



[Go to Product page](#)

3 Images

Overview

Quantity:	100 µL
Target:	SLC10A2
Reactivity:	Mouse, Rat
Host:	Rabbit
Clonality:	Polyclonal
Conjugate:	This SLC10A2 antibody is un-conjugated
Application:	Immunohistochemistry (IHC), Immunofluorescence (IF)

Product Details

Immunogen:	KLH conjugated Synthetic peptide corresponding to Mouse SLC10A2/ASBT
Cross-Reactivity:	Rat
Purification:	Affinity purification

Target Details

Target:	SLC10A2
Alternative Name:	SLC10A2/ASBT ( <a href="#">SLC10A2 Products</a> )
Background:	Could play a role in bone osteoclastic resorption. Cleaves type IV and type V collagen into large C-terminal three quarter fragments and shorter N-terminal one quarter fragments.
Gene ID:	20494
NCBI Accession:	<a href="#">NP_035518</a>

## Target Details

---

UniProt: [P70172](#)

## Application Details

---

Application Notes: IHC/IF (M,R) 1:3000-1:6000

Restrictions: For Research Use only

## Handling

---

Format: Liquid

Buffer: PBS, pH 7.4, 0.02 % sodium azide

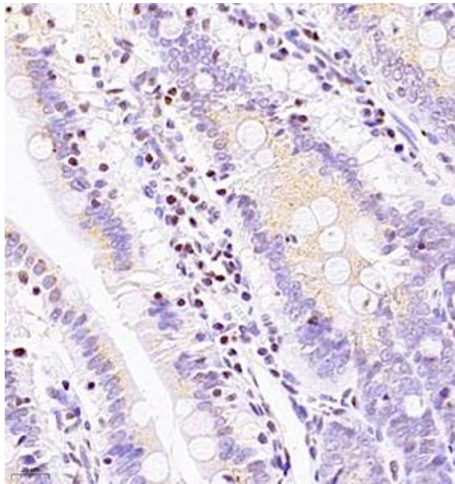
Preservative: Sodium azide

Precaution of Use: This product contains Sodium azide: a POISONOUS AND HAZARDOUS SUBSTANCE which should be handled by trained staff only.

Storage: -20 °C

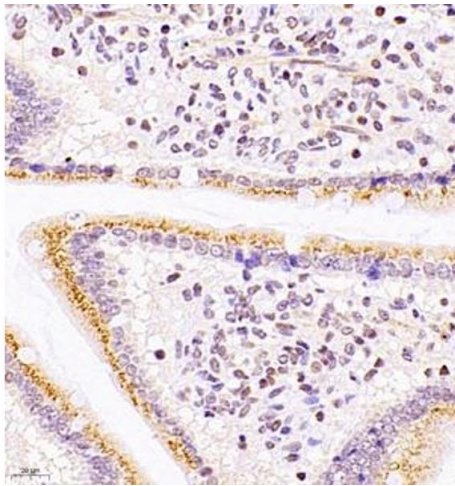
## Images

---



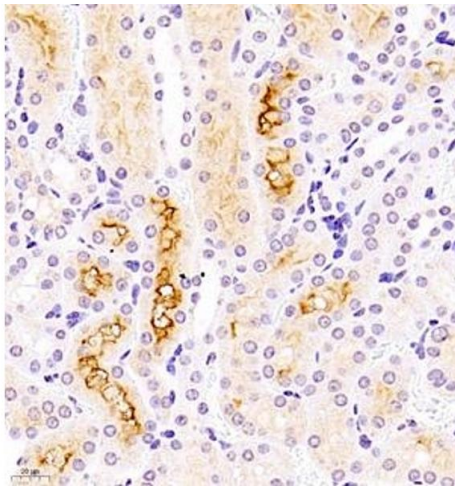
### Immunohistochemistry (Paraffin-embedded Sections)

**Image 1.** Immunohistochemistry of paraffin embedded rat ileum using ASBT (ABIN7075648) at dilution of 1:1500 (400x lens)



#### Immunohistochemistry (Paraffin-embedded Sections)

**Image 2.** Immunohistochemistry of paraffin embedded mouse duodenum using ASBT (ABIN7075648) at dilution of 1:1500 (400x lens)



#### Immunohistochemistry (Paraffin-embedded Sections)

**Image 3.** Immunohistochemistry of paraffin embedded mouse kidney using ASBT (ABIN7075648) at dilution of 1:1500 (400x lens)