

Datasheet for ABIN7075654

anti-SLC18A1 antibody

5 Images



[Go to Product page](#)

Overview

Quantity:	100 µL
Target:	SLC18A1
Reactivity:	Rat, Mouse
Host:	Rabbit
Clonality:	Polyclonal
Conjugate:	This SLC18A1 antibody is un-conjugated
Application:	Western Blotting (WB), Immunohistochemistry (IHC), Immunofluorescence (IF)

Product Details

Immunogen:	KLH conjugated Synthetic peptide corresponding to Mouse VMAT1
Cross-Reactivity:	Rat
Purification:	Affinity purification

Target Details

Target:	SLC18A1
Alternative Name:	VMAT1 (SLC18A1 Products)
Background:	Involved in the transport of biogenic monoamines, such as serotonin, from the cytoplasm into the secretory vesicles of neuroendocrine and endocrine cells.
Molecular Weight:	50 kDa
Gene ID:	110877

Target Details

NCBI Accession: [NP_694694](#)

UniProt: [Q8R090](#)

Application Details

Application Notes: WB (M,R) 1:1000-1:3000, IHC/IF (M,R) 1:400-1:800

Restrictions: For Research Use only

Handling

Format: Liquid

Buffer: PBS, pH 7.4, 0.02 % sodium azide

Preservative: Sodium azide

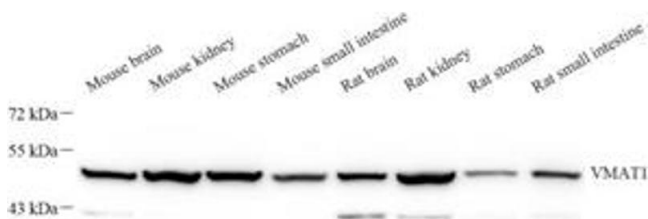
Precaution of Use: This product contains Sodium azide: a POISONOUS AND HAZARDOUS SUBSTANCE which should be handled by trained staff only.

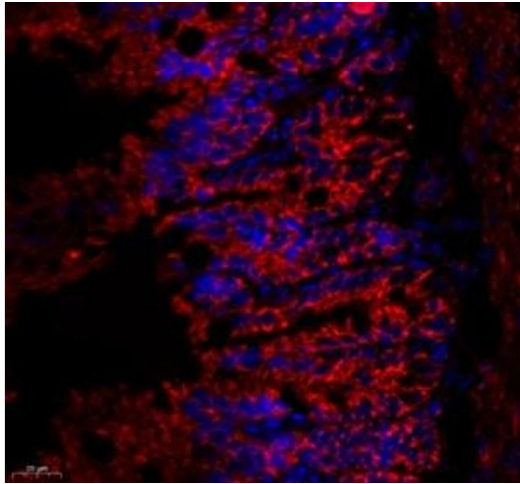
Storage: -20 °C

Images

Western Blotting

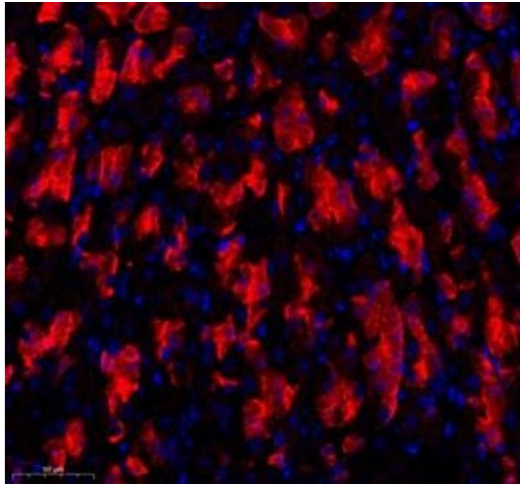
Image 1. Western blot analysis of VMAT1 (ABIN7075654) at dilution of 1: 1000





Immunofluorescence (Paraffin-embedded Sections)

Image 2. Immunofluorescence of paraffin embedded mouse duodenum using VMAT1 (ABIN7075654) at dilution of 1: 400 (450x lens)



Immunofluorescence (Paraffin-embedded Sections)

Image 3. Immunofluorescence of paraffin embedded mouse stomach using VMAT1 (ABIN7075654) at dilution of 1: 400 (300x lens)

Please check the [product details page](#) for more images. Overall 5 images are available for ABIN7075654.