

Datasheet for ABIN7075663

**anti-SLC22A1 antibody****3** Images[Go to Product page](#)

## Overview

Quantity:	100 µL
Target:	SLC22A1
Reactivity:	Human, Mouse, Rat
Host:	Rabbit
Clonality:	Polyclonal
Conjugate:	This SLC22A1 antibody is un-conjugated
Application:	Western Blotting (WB), Immunohistochemistry (IHC), Immunofluorescence (IF)

## Product Details

Immunogen:	KLH conjugated Synthetic peptide corresponding to Mouse SLC22A1/OCT1
Cross-Reactivity:	Rat
Purification:	Affinity purification

## Target Details

Target:	SLC22A1
Alternative Name:	SLC22A1/OCT1 ( <a href="#">SLC22A1 Products</a> )
Background:	Polyspecific organic cation transporters in the liver, kidney, intestine, and other organs are critical for elimination of many endogenous small organic cations as well as a wide array of drugs and environmental toxins. This gene is one of three similar cation transporter genes located in a cluster on chromosome 6. The encoded protein contains twelve putative transmembrane domains and is a plasma integral membrane protein. Two transcript variants

## Target Details

encoding two different isoforms have been found for this gene, but only the longer variant encodes a functional transporter.

Molecular Weight:	72 kDa
Gene ID:	20517
UniProt:	<a href="#">O08966</a>
Pathways:	<a href="#">Hormone Transport</a>

## Application Details

Application Notes:	WB (H,M,R) 1:500-1:1000, IHC/IF (R) 1:600-1:1200
Restrictions:	For Research Use only

## Handling

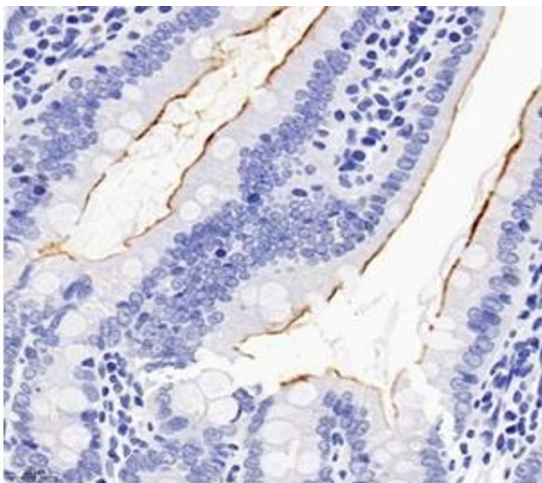
Format:	Liquid
Buffer:	PBS, pH 7.4, 0.02 % sodium azide
Preservative:	Sodium azide
Precaution of Use:	This product contains Sodium azide: a POISONOUS AND HAZARDOUS SUBSTANCE which should be handled by trained staff only.
Storage:	-20 °C

## Images

### Western Blotting

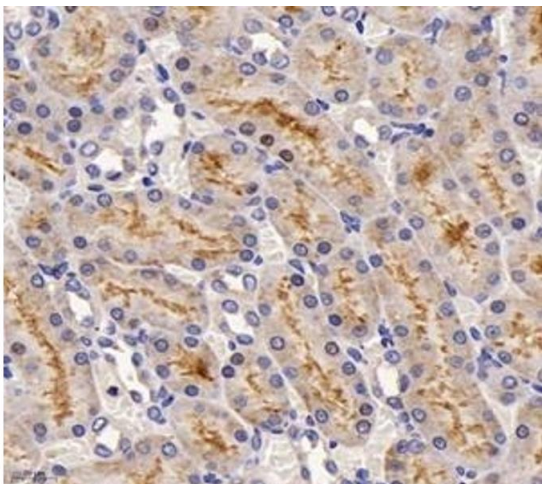
**Image 1.** Western blot analysis of SLC22A1 (ABIN7075663) at dilution of 1: 1000





#### Immunohistochemistry (Paraffin-embedded Sections)

**Image 2.** Immunohistochemistry analysis of paraffin-embedded rat duodenum using, SLC22A1 (ABIN7075663) at dilution of 1: 1200



#### Immunohistochemistry (Paraffin-embedded Sections)

**Image 3.** Immunohistochemistry analysis of paraffin-embedded rat kidney using, SLC22A1 (ABIN7075663) at dilution of 1: 1200