

Datasheet for ABIN7075681

anti-SLC6A15 antibody[Go to Product page](#)**2** Images

Overview

Quantity:	100 µL
Target:	SLC6A15
Reactivity:	Mouse, Rat
Host:	Rabbit
Clonality:	Polyclonal
Conjugate:	This SLC6A15 antibody is un-conjugated
Application:	Immunohistochemistry (IHC), Immunofluorescence (IF)

Product Details

Immunogen:	Recombinant protein corresponding to Mouse SLC6A15
Cross-Reactivity:	Rat
Purification:	Affinity purification

Target Details

Target:	SLC6A15
Alternative Name:	SLC6A15 (SLC6A15 Products)
Background:	This gene encodes a member of the solute carrier family 6 protein family which transports neutral amino acids. The encoded protein is thought to play a role in neuronal amino acid transport and may be associated with major depression. Multiple transcript variants encoding different isoforms have been found for this gene.
Gene ID:	103098

Target Details

NCBI Accession: [NP_001239259](#)

UniProt: [Q8BG16](#)

Application Details

Application Notes: IHC/IF (M,R) 1:200-1:600

Restrictions: For Research Use only

Handling

Format: Liquid

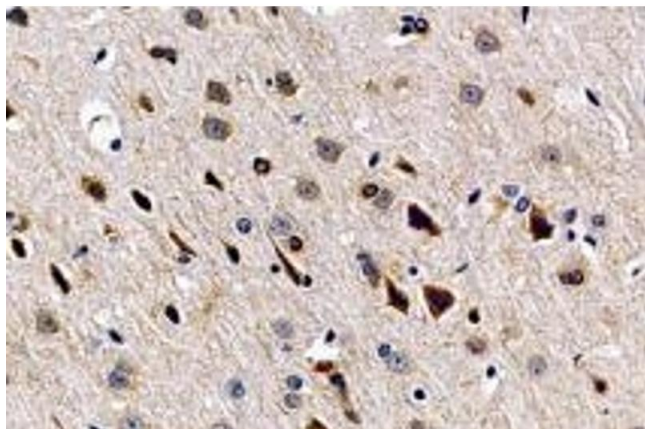
Buffer: PBS, pH 7.4, 0.02 % sodium azide

Preservative: Sodium azide

Precaution of Use: This product contains Sodium azide: a POISONOUS AND HAZARDOUS SUBSTANCE which should be handled by trained staff only.

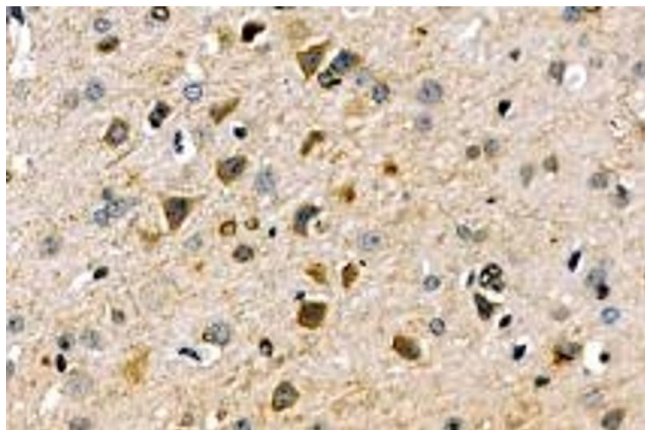
Storage: -20 °C

Images



Immunohistochemistry (Paraffin-embedded Sections)

Image 1. Immunohistochemistry analysis of paraffin-embedded rat brain using SLC6A15 (ABIN7075681) at dilution of 1: 600



Immunohistochemistry (Paraffin-embedded Sections)

Image 2. Immunohistochemistry analysis of paraffin-embedded mouse brain using, SLC6A15 (ABIN7075681) at dilution of 1: 600