

Datasheet for ABIN7075683

## anti-SLC7A14 antibody

3 Images



[Go to Product page](#)

### Overview

Quantity:	100 µL
Target:	SLC7A14
Reactivity:	Mouse, Rat
Host:	Rabbit
Clonality:	Polyclonal
Conjugate:	This SLC7A14 antibody is un-conjugated
Application:	Immunohistochemistry (IHC), Immunofluorescence (IF)

### Product Details

Immunogen:	Recombinant protein corresponding to Mouse SLC7A14
Cross-Reactivity:	Rat
Purification:	Affinity purification

### Target Details

Target:	SLC7A14
Alternative Name:	SLC7A14 ( <a href="#">SLC7A14 Products</a> )
Background:	May be involved in arginine transport.
Gene ID:	241919
NCBI Accession:	<a href="#">NP_766449</a>
UniProt:	<a href="#">Q8BXR1</a>

## Application Details

Application Notes: IHC/IF (M,R) 1:700-1:1400

Restrictions: For Research Use only

## Handling

Format: Liquid

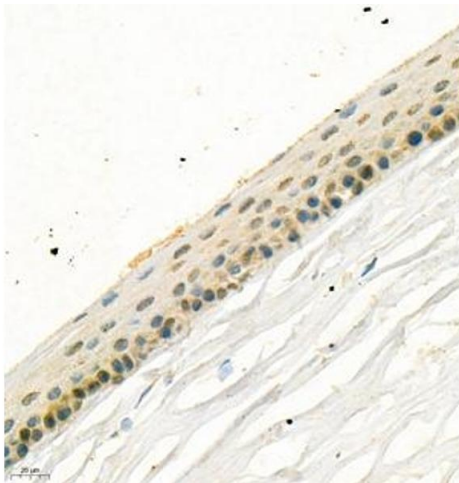
Buffer: PBS, pH 7.4, 0.02 % sodium azide

Preservative: Sodium azide

Precaution of Use: This product contains Sodium azide: a POISONOUS AND HAZARDOUS SUBSTANCE which should be handled by trained staff only.

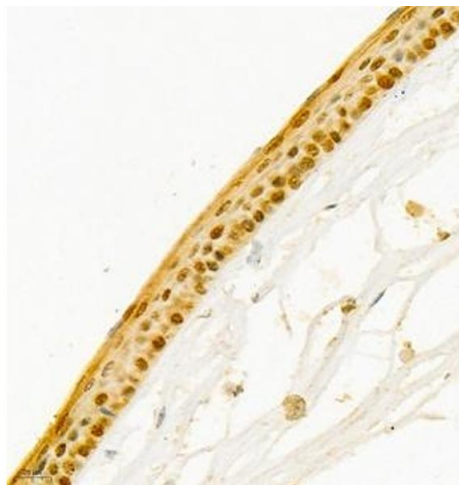
Storage: -20 °C

## Images



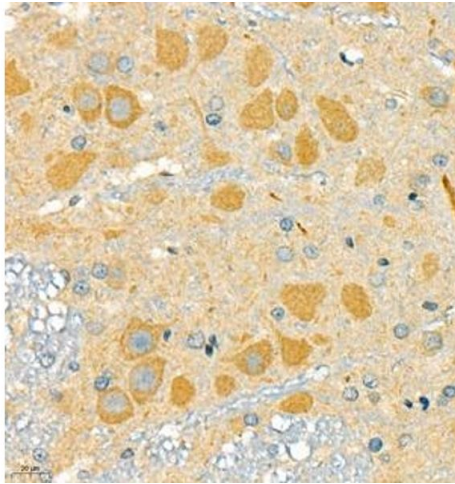
### Immunohistochemistry (Paraffin-embedded Sections)

**Image 1.** Immunohistochemistry of paraffin embedded rat eye using SLC7A14 (ABIN7075683) at dilution of 1:700 (400x lens)



### Immunohistochemistry (Paraffin-embedded Sections)

**Image 2.** Immunohistochemistry of paraffin embedded mouse eye using SLC7A14 (ABIN7075683) at dilution of 1:700 (400x lens)



### Immunohistochemistry (Paraffin-embedded Sections)

**Image 3.** Immunohistochemistry of paraffin embedded rat brain using SLC7A14 (ABIN7075683) at dilution of 1:700 (400x lens)