



[Go to Product page](#)

Datasheet for ABIN7075684

anti-SLC8A3 antibody

3 Images

Overview

Quantity:	100 µL
Target:	SLC8A3
Reactivity:	Rat, Mouse
Host:	Rabbit
Clonality:	Polyclonal
Conjugate:	This SLC8A3 antibody is un-conjugated
Application:	Immunohistochemistry (IHC), Immunofluorescence (IF)

Product Details

Immunogen:	Recombinant protein corresponding to Mouse SLC8A3
Cross-Reactivity:	Rat
Purification:	Affinity purification

Target Details

Target:	SLC8A3
Alternative Name:	SLC8A3 (SLC8A3 Products)
Background:	<p>SLC8A3 is a member of the sodium/calcium exchanger integral membrane protein family. Three mammalian isoforms in family 8 have been identified. Na⁺/Ca²⁺ exchange proteins are involved in maintaining Ca²⁺ homeostasis in a wide variety of cell types. The protein is regulated by intracellular calcium ions and is found in both the plasma membrane and intracellular organellar membranes, where exchange of Na⁺ for Ca²⁺ occurs in an electrogenic</p>

Target Details

manner.

Gene ID: 110893

NCBI Accession: [NP_001161392](#)

UniProt: [S4R2P9](#)

Application Details

Application Notes: IHC/IF (M,R) 1:800-1:1600

Restrictions: For Research Use only

Handling

Format: Liquid

Buffer: PBS, pH 7.4, 0.02 % sodium azide

Preservative: Sodium azide

Precaution of Use: This product contains Sodium azide: a POISONOUS AND HAZARDOUS SUBSTANCE which should be handled by trained staff only.

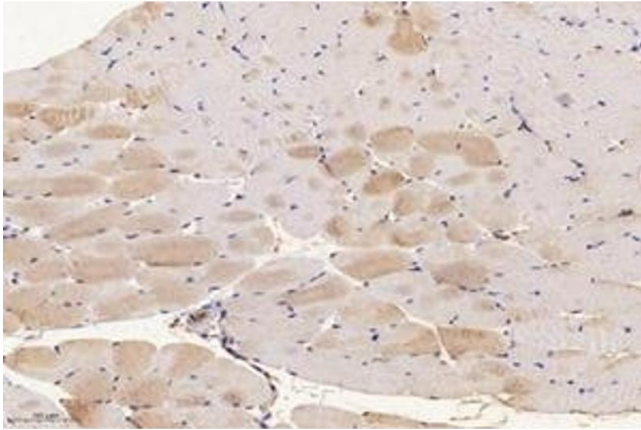
Storage: -20 °C

Images



Immunohistochemistry (Paraffin-embedded Sections)

Image 1. Immunohistochemistry analysis of paraffin-embedded rat muscle using, SLC8A3 (ABIN7075684) at dilution of 1: 1600



Immunohistochemistry (Paraffin-embedded Sections)

Image 2. Immunohistochemistry analysis of paraffin-embedded mouse muscle using SLC8A3 (ABIN7075684) at dilution of 1: 1600



Immunohistochemistry (Paraffin-embedded Sections)

Image 3. Immunohistochemistry analysis of paraffin-embedded mouse skeletal muscle using SLC8A3 (ABIN7075684) at dilution of 1: 1600