



[Go to Product page](#)

Datasheet for ABIN7075767  
**anti-SUPT3H/SPT3 antibody**

5 Images

### Overview

Quantity:	100 µL
Target:	SUPT3H/SPT3 (SUPT3H)
Reactivity:	Human, Mouse, Rat
Host:	Rabbit
Clonality:	Polyclonal
Application:	Western Blotting (WB), Immunohistochemistry (IHC), Immunofluorescence (IF)

### Product Details

Immunogen:	Recombinant protein corresponding to Human SUPT3H
Cross-Reactivity:	Mouse, Rat
Purification:	Affinity purification

### Target Details

Target:	SUPT3H/SPT3 (SUPT3H)
Alternative Name:	SUPT3H ( <a href="#">SUPT3H Products</a> )
Background:	The transcription of many RNA polymerase II-dependent genes requires Spt3, a member of the <i>S. cerevisiae</i> SAGA complex. Transcription from delta sequences, the long terminal repeats that flank yeast Ty elements, requires the yeast SPT3 gene. Spt3 and Spt20 work together to recruit TATA-box binding protein (TBP) to the core promoter allowing TBP to bind to SAGA-dependent promoters. Null mutations in the Spt3 gene cause defects in sporulation, diploid filamentous growth, and haploid invasive growth, indicating that Spt3 has an important role in both mating

## Target Details

and development pathways in yeast. At the promoters of some genes including yeast HO, HIS3 and TRP3 genes, Spt3 inhibits binding of TBP, resulting in reduced transcription.

Molecular Weight: 36 kDa

Gene ID: 8464

UniProt: [O75486](#)

## Application Details

Application Notes: WB (H,M,R) 1:500-1:1000, IHC/IF (M,R) 1:500-1:1500

Restrictions: For Research Use only

## Handling

Format: Liquid

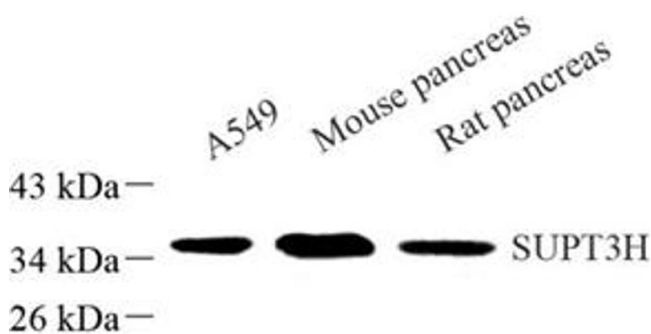
Buffer: PBS, pH 7.4, 0.02 % sodium azide

Preservative: Sodium azide

Precaution of Use: This product contains Sodium azide: a POISONOUS AND HAZARDOUS SUBSTANCE which should be handled by trained staff only.

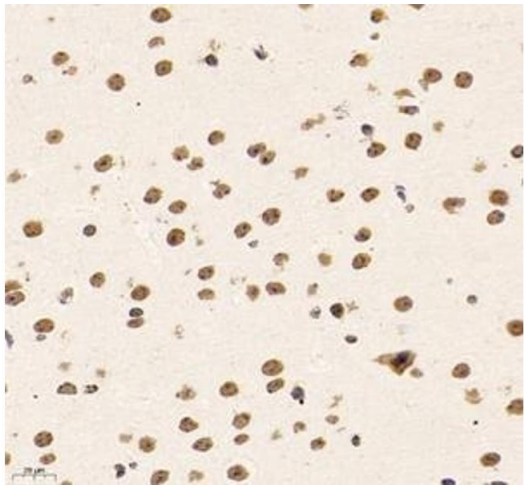
Storage: -20 °C

## Images



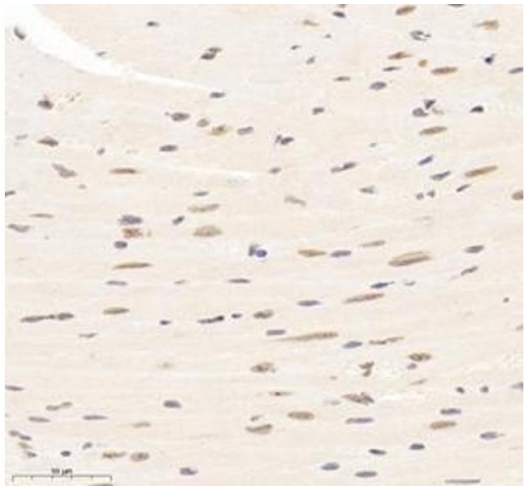
### Western Blotting

**Image 1.** Western blot analysis of SUPT3H (ABIN7075767) at dilution of 1: 500



#### Immunohistochemistry (Paraffin-embedded Sections)

**Image 2.** Immunohistochemistry of paraffin embedded mouse brain using SUPT3H (ABIN7075767) at dilution of 1:1500 (400x lens)



#### Immunohistochemistry (Paraffin-embedded Sections)

**Image 3.** Immunohistochemistry of paraffin embedded mouse heart using SUPT3H (ABIN7075767) at dilution of 1:1500 (400x lens)

Please check the [product details page](#) for more images. Overall 5 images are available for ABIN7075767.