



[Go to Product page](#)

Datasheet for ABIN7075813

anti-TCRb antibody

3 Images

Overview

Quantity:	100 µL
Target:	TCRb
Reactivity:	Human
Host:	Rabbit
Clonality:	Polyclonal
Application:	Immunohistochemistry (IHC), Immunofluorescence (IF)

Product Details

Immunogen:	KLH conjugated Synthetic peptide corresponding to Human TCRb
Purification:	Affinity purification

Target Details

Target:	TCRb
Alternative Name:	TCRb (TCRb Products)
Gene ID:	6957
UniProt:	P0DSE2

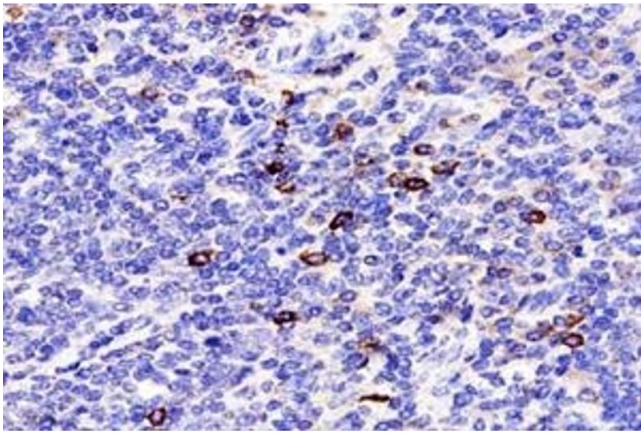
Application Details

Application Notes:	IHC/IF (H) 1:900-1:1800
Restrictions:	For Research Use only

Handling

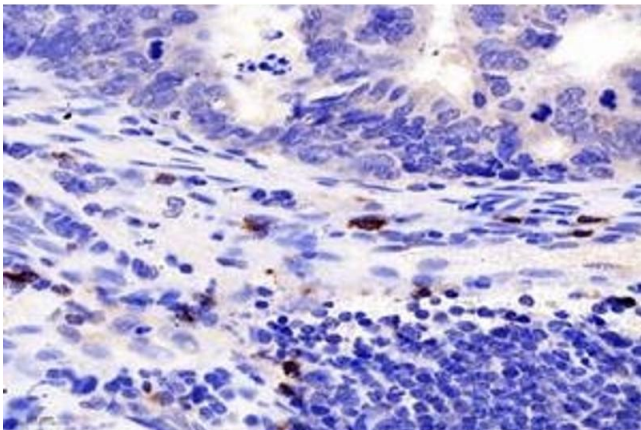
Format:	Liquid
Buffer:	PBS, pH 7.4, 0.02 % sodium azide
Preservative:	Sodium azide
Precaution of Use:	This product contains Sodium azide: a POISONOUS AND HAZARDOUS SUBSTANCE which should be handled by trained staff only.
Storage:	-20 °C

Images



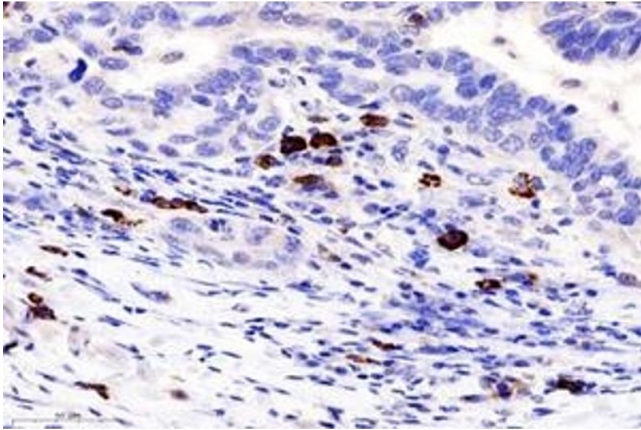
Immunohistochemistry (Paraffin-embedded Sections)

Image 1. Immunohistochemistry analysis of paraffin-embedded human tonsil using TCRb (ABIN7075813) at dilution of 1: 1800



Immunohistochemistry (Paraffin-embedded Sections)

Image 2. Immunohistochemistry analysis of paraffin-embedded human colon cancer using TCRb (ABIN7075813) at dilution of 1: 1800



Immunohistochemistry (Paraffin-embedded Sections)

Image 3. Immunohistochemistry analysis of paraffin-embedded human lung cancer using TCRb (ABIN7075813) at dilution of 1: 1800