

Datasheet for ABIN7075838
anti-tau antibody (pSer202, pThr205)[Go to Product page](#)

3 Images

Overview

Quantity:	100 µL
Target:	tau
Binding Specificity:	pSer202, pThr205
Reactivity:	Human, Mouse, Rat
Host:	Rabbit
Clonality:	Polyclonal
Conjugate:	This tau antibody is un-conjugated
Application:	Western Blotting (WB), Immunohistochemistry (IHC), Immunofluorescence (IF)

Product Details

Immunogen:	KLH conjugated Synthetic phosphopeptide corresponding to Human TAU (S202/T205)
Cross-Reactivity:	Mouse, Rat
Purification:	Affinity purification

Target Details

Target:	tau
Alternative Name:	TAU (tau Products)
Background:	Promotes microtubule assembly and stability, and might be involved in the establishment and maintenance of neuronal polarity .The C-terminus binds axonal microtubules while the N-terminus binds neural plasma membrane components, suggesting that tau functions as a linker protein between both .Axonal polarity is predetermined by TAU/MAPT localization (in the

Target Details

neuronal cell) in the domain of the cell body defined by the centrosome. The short isoforms allow plasticity of the cytoskeleton whereas the longer isoforms may preferentially play a role in its stabilization.

Molecular Weight: 50-80 kDa

Application Details

Application Notes: WB (H,M,R) 1:500-1:1000, IHC/IF (H,M,R) 1:600-1:1200

Restrictions: For Research Use only

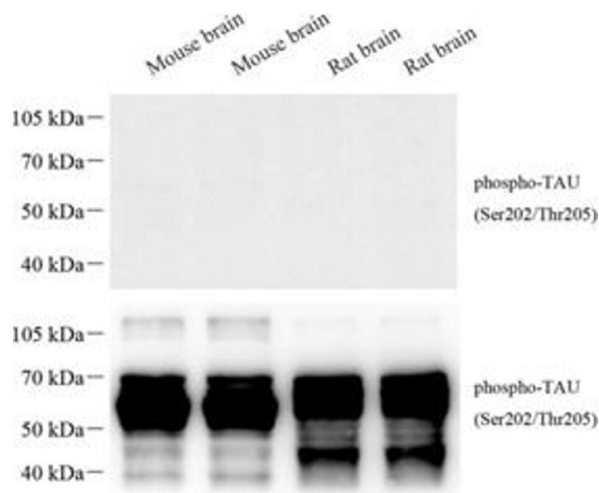
Handling

Buffer: , 0.02 % sodium azide

Preservative: Sodium azide

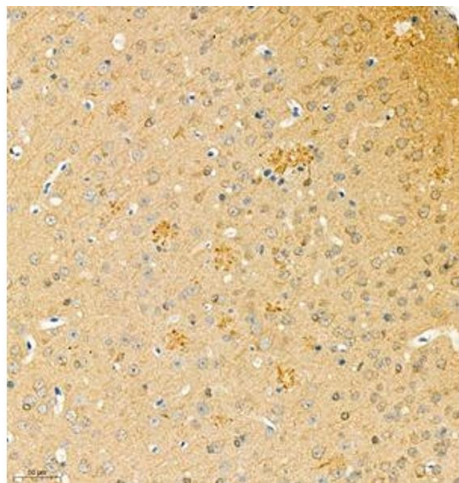
Precaution of Use: This product contains Sodium azide: a POISONOUS AND HAZARDOUS SUBSTANCE which should be handled by trained staff only.

Images



Western Blotting

Image 1. Western blot analysis of phospho-TAU (S202/T205) (ABIN7075838) at dilution of 1: 1000 The figure above was treated with phospho-blocking pepide, the figure below was treated with non-phospho- blocking pepide.



Immunohistochemistry (Paraffin-embedded Sections)

Image 2. Immunohistochemistry of paraffin embedded mouse brain using phospho-TAU (S202/T205) (ABIN7075838) at dilution of 1: 1200

Western Blotting

Image 3. Western blot analysis of phospho-TAU (S202/T205) (ABIN7075838) at dilution of 1: 1000

