



Datasheet for ABIN7075842

anti-TAUT antibody



[Go to Product page](#)

4 Images

Overview

Quantity:	100 µL
Target:	TAUT
Reactivity:	Rat
Host:	Rabbit
Clonality:	Polyclonal
Conjugate:	This TAUT antibody is un-conjugated
Application:	Immunohistochemistry (IHC), Immunofluorescence (IF)

Product Details

Immunogen:	KLH conjugated Synthetic peptide corresponding to Mouse Slc6a6/Taut
Cross-Reactivity:	Rat
Purification:	Affinity purification

Target Details

Target:	TAUT
Alternative Name:	Slc6a6/Taut (TAUT Products)
Background:	Sodium-dependent taurine and beta-alanine transporter. Chloride ions are necessary for optimal uptake.
Gene ID:	21366
UniProt:	O35316

Application Details

Application Notes: IHC/IF (R) 1:500-1:1000/1:300-1:600

Restrictions: For Research Use only

Handling

Format: Liquid

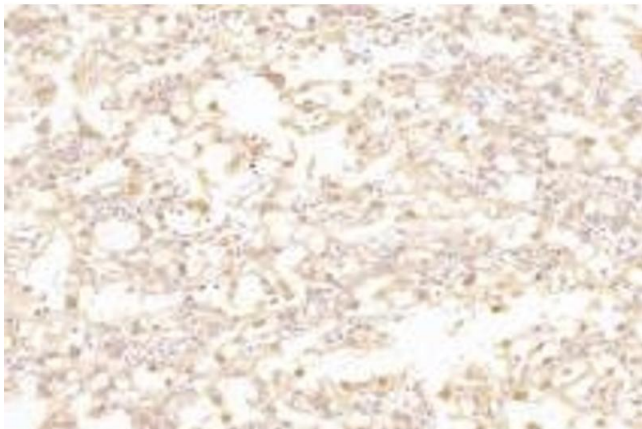
Buffer: PBS, pH 7.4, 0.02 % sodium azide

Preservative: Sodium azide

Precaution of Use: This product contains Sodium azide: a POISONOUS AND HAZARDOUS SUBSTANCE which should be handled by trained staff only.

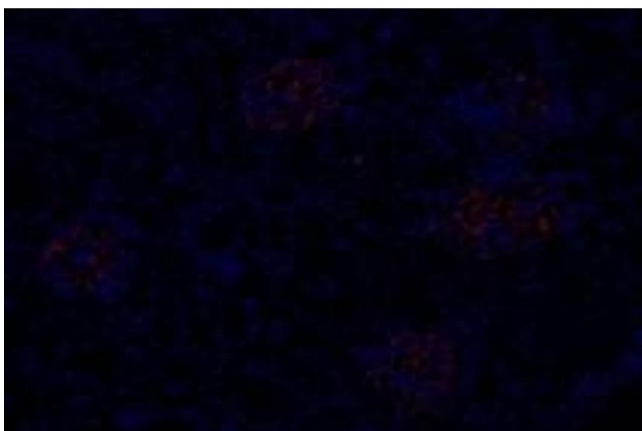
Storage: -20 °C

Images



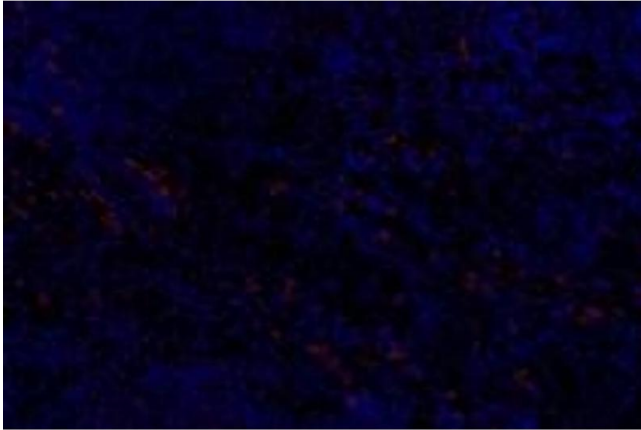
Immunohistochemistry (Paraffin-embedded Sections)

Image 1. Immunohistochemistry analysis of paraffin-embedded rat placenta using, Slc6a6 (ABIN7075842) at dilution of 1: 1000



Immunofluorescence (fixed cells)

Image 2. Immunofluorescent analysis of paraformaldehyde-fixed rat kidney using, Slc6a6 (ABIN7075842) at dilution of 1: 600



Immunofluorescence (fixed cells)

Image 3. Immunofluorescent analysis of paraformaldehyde-fixed rat spleen using, Slc6a6 (ABIN7075842) at dilution of 1:600

Please check the [product details page](#) for more images. Overall 4 images are available for ABIN7075842.