

Datasheet for ABIN7075843

anti-TBC1D1 antibody

6 Images



[Go to Product page](#)

Overview

Quantity:	100 µL
Target:	TBC1D1
Reactivity:	Mouse, Rat
Host:	Rabbit
Clonality:	Polyclonal
Conjugate:	This TBC1D1 antibody is un-conjugated
Application:	Immunohistochemistry (IHC), Immunofluorescence (IF)

Product Details

Immunogen:	Recombinant protein corresponding to Mouse TBC1D1
Cross-Reactivity:	Rat
Purification:	Affinity purification

Target Details

Target:	TBC1D1
Alternative Name:	TBC1D1 (TBC1D1 Products)
Background:	TBC1 domain family member 1 is a protein encoded by the TBC1D1 gene. TBC1D1 is the founding member of a family of proteins sharing a 180- to 200-amino acid TBC domain presumed to have a role in regulating cell growth and cell differentiation. These proteins share significant homology with TRE2, yeast Bub2, and CDC16.
Gene ID:	57915

Target Details

NCBI Accession: [NP_001297540](#)

UniProt: [Q60949](#)

Application Details

Application Notes: IHC/IF (M,R) 1:1000-1:4000/1:500-1:2000

Restrictions: For Research Use only

Handling

Format: Liquid

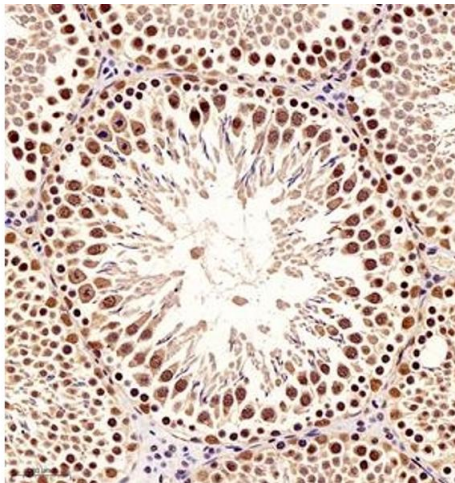
Buffer: PBS, pH 7.4, 0.02 % sodium azide

Preservative: Sodium azide

Precaution of Use: This product contains Sodium azide: a POISONOUS AND HAZARDOUS SUBSTANCE which should be handled by trained staff only.

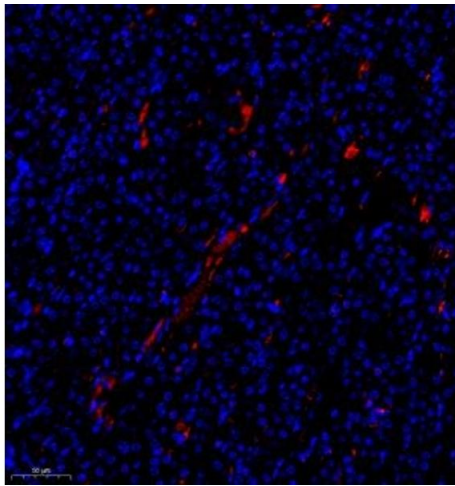
Storage: -20 °C

Images



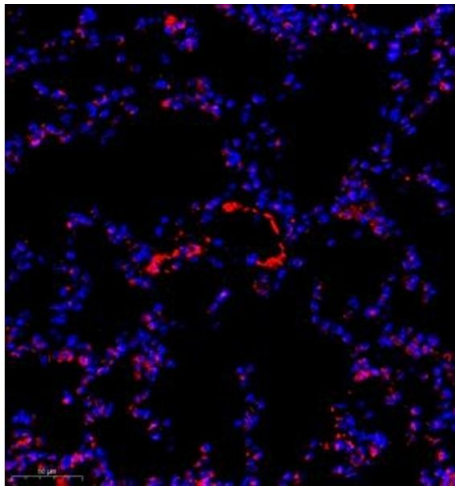
Immunohistochemistry (Paraffin-embedded Sections)

Image 1. Immunohistochemistry of paraffin embedded rat testis using TBC1D1 (ABIN7075843) at dilution of 1:2000 (250x lens)



Immunofluorescence (Paraffin-embedded Sections)

Image 2. Immunofluorescence of paraffin embedded mouse nephritis using TBC1d1 (ABIN7075843) at dilution of 1:1000 (250x lens)



Immunofluorescence (Paraffin-embedded Sections)

Image 3. Immunofluorescence of paraffin embedded mouse pneumonia using TBC1d1 (ABIN7075843) at dilution of 1:1000 (300x lens)

Please check the [product details page](#) for more images. Overall 6 images are available for ABIN7075843.