

Datasheet for ABIN7075900  
**anti-Thyroglobulin antibody**

## 2 Images

[Go to Product page](#)

## Overview

Quantity:	100 µL
Target:	Thyroglobulin (TG)
Reactivity:	Mouse, Rat
Host:	Rabbit
Clonality:	Polyclonal
Conjugate:	This Thyroglobulin antibody is un-conjugated
Application:	Immunohistochemistry (IHC), Immunofluorescence (IF)

## Product Details

Immunogen:	Recombinant protein corresponding to Mouse Thyroglobulin
Cross-Reactivity:	Rat
Purification:	Affinity purification

## Target Details

Target:	Thyroglobulin (TG)
Alternative Name:	Thyroglobulin ( <a href="#">TG Products</a> )
Background:	<p>Thyroglobulin (Tg) is a glycoprotein homodimer produced predominantly by the thyroid gland. It acts as a substrate for the synthesis of thyroxine and triiodothyronine as well as the storage of the inactive forms of thyroid hormone and iodine. Thyroglobulin is secreted from the endoplasmic reticulum to its site of iodination, and subsequent thyroxine biosynthesis, in the follicular lumen. Mutations in this gene cause thyroid dysmorphogenesis, manifested as</p>

## Target Details

goiter, and are associated with moderate to severe congenital hypothyroidism. Polymorphisms in this gene are associated with susceptibility to autoimmune thyroid diseases (AITD) such as Graves disease and Hashimoto thyroiditis.

Gene ID: 21819

NCBI Accession: [NP\\_033401](#)

UniProt: [O08710](#)

Pathways: [Thyroid Hormone Synthesis](#)

## Application Details

Application Notes: IHC/IF (M,R) 1:3000-1:6000

Restrictions: For Research Use only

## Handling

Format: Liquid

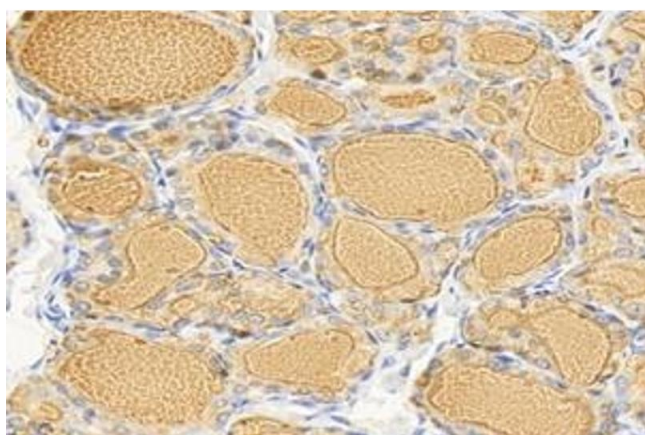
Buffer: PBS, pH 7.4, 0.02 % sodium azide

Preservative: Sodium azide

Precaution of Use: This product contains Sodium azide: a POISONOUS AND HAZARDOUS SUBSTANCE which should be handled by trained staff only.

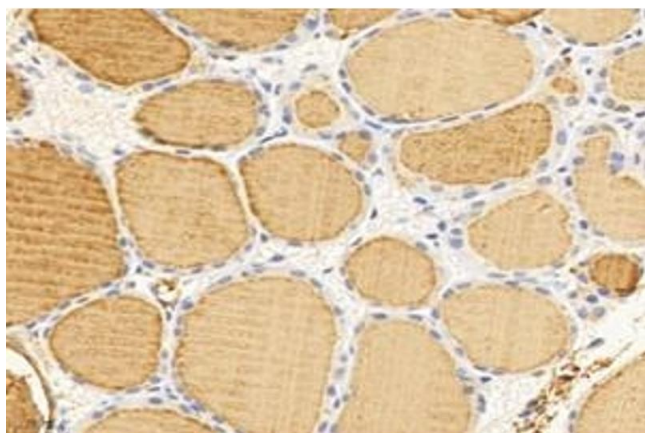
Storage: -20 °C

## Images



### Immunohistochemistry (Paraffin-embedded Sections)

**Image 1.** Immunohistochemistry analysis of paraffin-embedded rat thyroid gland using TG (ABIN7075900) at dilution of 1: 6000



#### Immunohistochemistry (Paraffin-embedded Sections)

**Image 2.** Immunohistochemistry analysis of paraffin-embedded mouse thyroid gland using TG (ABIN7075900) at dilution of 1: 6000