



[Go to Product page](#)

Datasheet for ABIN7075995
anti-TMEM176A antibody

2 Images

Overview

| | |
|--------------|-----------------------------------------------------|
| Quantity: | 100 µL |
| Target: | TMEM176A |
| Reactivity: | Rat |
| Host: | Rabbit |
| Clonality: | Polyclonal |
| Conjugate: | This TMEM176A antibody is un-conjugated |
| Application: | Immunofluorescence (IF), Immunohistochemistry (IHC) |

Product Details

| | |
|-------------------|------------------------------------------------------------------|
| Immunogen: | KLH conjugated Synthetic peptide corresponding to Mouse TMEM176A |
| Cross-Reactivity: | Rat |
| Purification: | Affinity purification |

Target Details

| | |
|-------------------|---------------------------------------------------------------------------------------------------------------------------------------------------------------------------------------------------------------------------------------------------------------------------------------------------------------------------------------------------------------------------------------------------------------------------------------------|
| Target: | TMEM176A |
| Alternative Name: | TMEM176A (TMEM176A Products) |
| Background: | TMEM176A is a 235 amino acid multi-pass membrane protein belonging to the TMEM176 family. The gene encoding GS188 maps to human chromosome 7, which houses over 1,000 genes and comprises nearly 5 % of the human genome. Chromosome 7 has been linked to Osteogenesis imperfecta, Pendred syndrome, Lissencephaly, Citrullinemia and Shwachman-Diamond syndrome. The deletion of a portion of the q arm of chromosome 7 is associated with |

Target Details

Williams-Beuren syndrome, a condition characterized by mild mental retardation, an unusual comfort and friendliness with strangers and an elfin appearance.

Gene ID: 66058

UniProt: [Q9DCS1](#)

Application Details

Application Notes: IHC/IF (R) 1:500-1:1000

Restrictions: For Research Use only

Handling

Format: Liquid

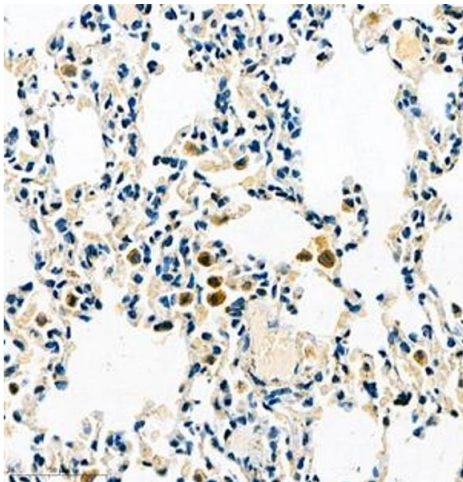
Buffer: PBS, pH 7.4, 0.02 % sodium azide

Preservative: Sodium azide

Precaution of Use: This product contains Sodium azide: a POISONOUS AND HAZARDOUS SUBSTANCE which should be handled by trained staff only.

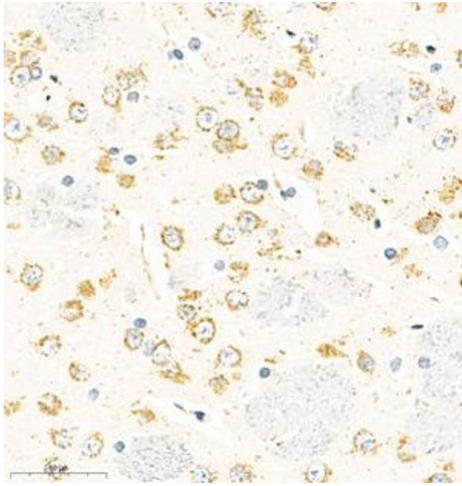
Storage: -20 °C

Images



Immunohistochemistry (Paraffin-embedded Sections)

Image 1. Immunohistochemistry of paraffin embedded rat lung using TMEM176A (ABIN7075995) at dilution of 1:500 (400x lens)



Immunohistochemistry (Paraffin-embedded Sections)

Image 2. Immunohistochemistry of paraffin embedded rat brain using TMEM176A (ABIN7075995) at dilution of 1:500 (400x lens)