

Datasheet for ABIN7076085

anti-TWF2 antibody[Go to Product page](#)**1** Image

Overview

Quantity:	100 µL
Target:	TWF2
Reactivity:	Human, Mouse, Rat
Host:	Rabbit
Clonality:	Polyclonal
Conjugate:	This TWF2 antibody is un-conjugated
Application:	Western Blotting (WB)

Product Details

Immunogen:	Recombinant protein corresponding to Mouse TWF2
Cross-Reactivity:	Human, Rat
Purification:	Affinity purification

Target Details

Target:	TWF2
Alternative Name:	TWF2 (TWF2 Products)
Background:	<p>TWF2 (Twinfilin 2) was identified by its interaction with the catalytic domain of protein kinase C zeta. It contains an actin binding site and an ATP binding site and is most closely related to twinfilin (PTK9), a conserved actin monomer binding protein. TWF2 is an actin binding protein involved in motile and morphological processes. It inhibits actin polymerization, likely by sequestering G actin. By capping the barbed ends of filaments, it also regulates motility. It</p>

Target Details

	seems to play an important role in clathrin mediated endocytosis and distribution of endocytic organelles.
Molecular Weight:	39 kDa
Gene ID:	23999
UniProt:	Q9Z0P5
Pathways:	Regulation of Actin Filament Polymerization , Regulation of Cell Size , Maintenance of Protein Location , Toll-Like Receptors Cascades

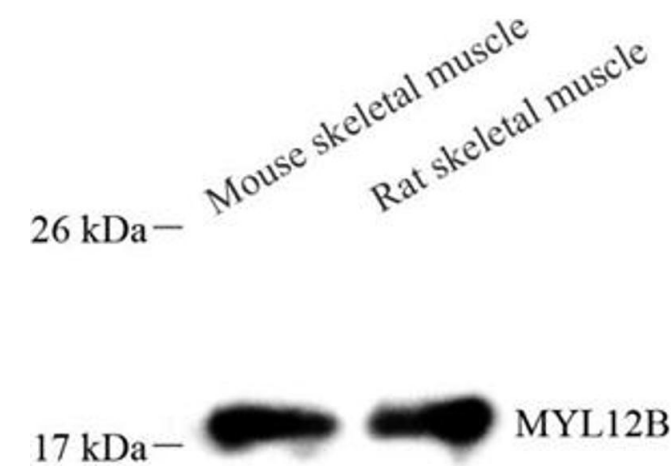
Application Details

Application Notes:	WB (H,M,R) 1:500-1:1000
Restrictions:	For Research Use only

Handling

Format:	Liquid
Buffer:	PBS, pH 7.4, 0.02 % sodium azide
Preservative:	Sodium azide
Precaution of Use:	This product contains Sodium azide: a POISONOUS AND HAZARDOUS SUBSTANCE which should be handled by trained staff only.
Storage:	-20 °C

Images



Western Blotting

Image 1. Western blot analysis of TWF2 (ABIN7076085), at dilution of 1: 1000