



[Go to Product page](#)

Datasheet for ABIN7076212
anti-WDR13 antibody

3 Images

Overview

Quantity:	100 µL
Target:	WDR13
Reactivity:	Mouse, Rat
Host:	Rabbit
Clonality:	Polyclonal
Conjugate:	This WDR13 antibody is un-conjugated
Application:	Western Blotting (WB), Immunohistochemistry (IHC), Immunofluorescence (IF)

Product Details

Immunogen:	Recombinant protein corresponding to Mouse WDR13
Cross-Reactivity:	Rat
Purification:	Affinity purification

Target Details

Target:	WDR13
Alternative Name:	WDR13 (WDR13 Products)
Background:	This gene encodes a member of the WD repeat protein family. WD repeats are minimally conserved regions of approximately 40 amino acids typically bracketed by Gly-His and Trp-Asp (GH-WD), which may facilitate formation of heterotrimeric or multiprotein complexes. Members of this family are involved in a variety of cellular processes, including cell cycle progression, signal transduction, apoptosis, and gene regulation. A similar protein in mouse is thought to be

Target Details

a negative regulator of the pancreatic beta cell proliferation. Mice lacking this gene exhibit increased pancreatic islet mass and higher serum insulin levels, and are mildly obese.

Molecular Weight: 54 kDa

Gene ID: 73447

NCBI Accession: [NP_080413](#)

UniProt: [Q91V09](#)

Application Details

Application Notes: WB (M) 1:1000-1:2000, IHC/IF (M,R) 1:2500-1:8000

Restrictions: For Research Use only

Handling

Format: Liquid

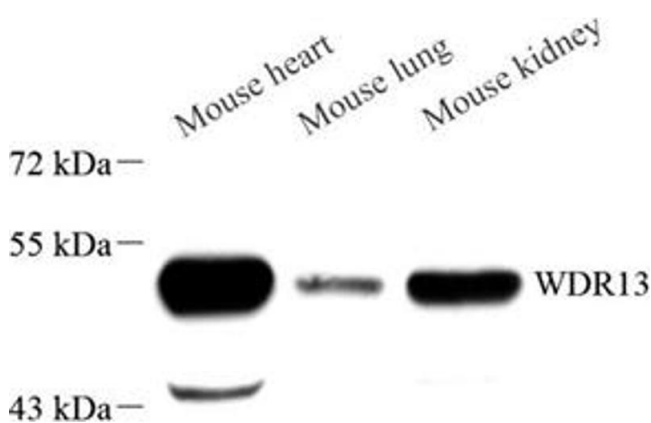
Buffer: PBS, pH 7.4, 0.02 % sodium azide

Preservative: Sodium azide

Precaution of Use: This product contains Sodium azide: a POISONOUS AND HAZARDOUS SUBSTANCE which should be handled by trained staff only.

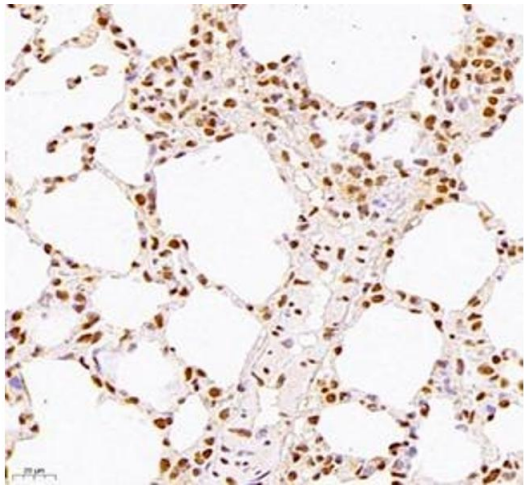
Storage: -20 °C

Images



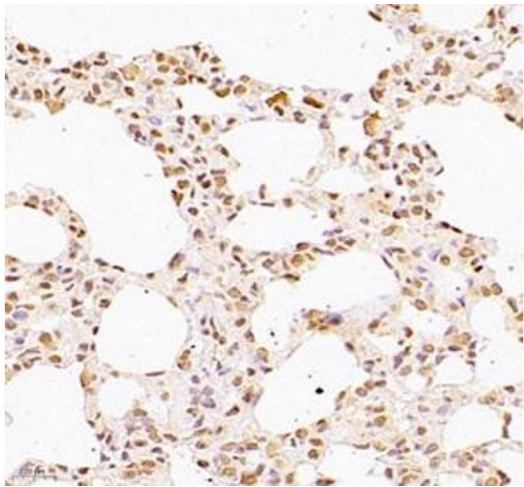
Western Blotting

Image 1. Western blot analysis of WDR13 (ABIN7076212) at dilution of 1: 1000



Immunohistochemistry (Paraffin-embedded Sections)

Image 2. Immunohistochemistry of paraffin embedded mouse lung using WDR13 (ABIN7076212) at dilution of 1: 2500 (400x lens)



Immunohistochemistry (Paraffin-embedded Sections)

Image 3. Immunohistochemistry of paraffin embedded rat lung using WDR13 (ABIN7076212) at dilution of 1: 2500 (400x lens)