



[Go to Product page](#)

Datasheet for ABIN7076233
anti-WHSC1L1 antibody

6 Images

Overview

Quantity:	100 µL
Target:	WHSC1L1
Reactivity:	Mouse, Rat
Host:	Rabbit
Clonality:	Polyclonal
Conjugate:	This WHSC1L1 antibody is un-conjugated
Application:	Immunohistochemistry (IHC), Immunofluorescence (IF)

Product Details

Immunogen:	Recombinant protein corresponding to Human NSD3
Cross-Reactivity:	Mouse, Rat
Purification:	Affinity purification

Target Details

Target:	WHSC1L1
Alternative Name:	NSD3 (WHSC1L1 Products)
Background:	Histone methyltransferase. Preferentially dimethylates 'Lys-4' and 'Lys-27' of histone H3 forming H3K2me2 and H3K27me2. H3 'Lys-4' methylation represents a specific tag for epigenetic transcriptional activation, while 'Lys-27' is a mark for transcriptional repression.
Gene ID:	234135

Target Details

NCBI Accession: [NP_060248](#)

UniProt: [Q9BZ95](#)

Application Details

Application Notes: IHC/IF (M,R) 1:1400-1:2800/1:600-1:1200

Restrictions: For Research Use only

Handling

Format: Liquid

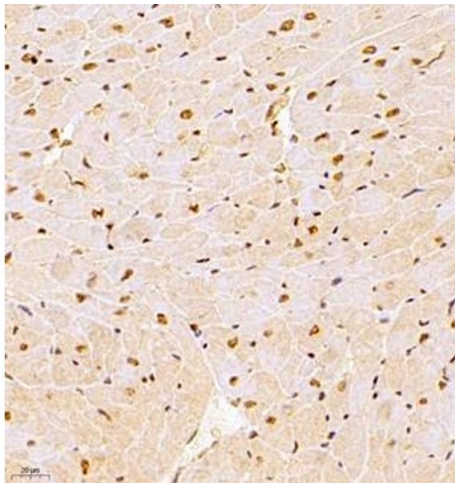
Buffer: PBS, pH 7.4, 0.02 % sodium azide

Preservative: Sodium azide

Precaution of Use: This product contains Sodium azide: a POISONOUS AND HAZARDOUS SUBSTANCE which should be handled by trained staff only.

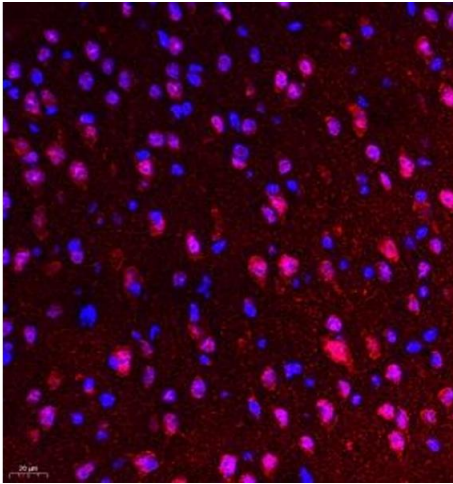
Storage: -20 °C

Images



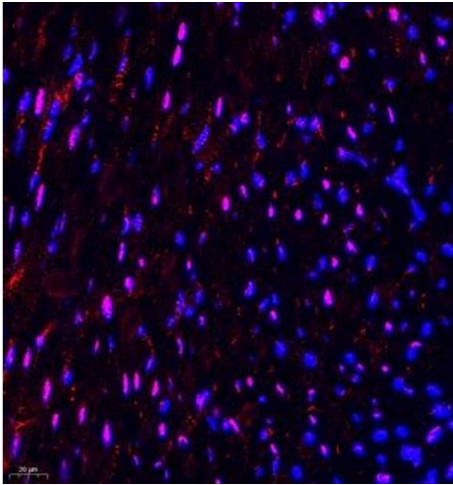
Immunohistochemistry (Paraffin-embedded Sections)

Image 1. Immunohistochemistry of paraffin embedded rat heart using NSD3 (ABIN7076233) at dilution of 1:1400 (400x lens)



Immunofluorescence (Paraffin-embedded Sections)

Image 2. Immunofluorescence of paraffin embedded mouse brain using NSD3 (ABIN7076233) at dilution of 1:650 (400x lens)



Immunofluorescence (Paraffin-embedded Sections)

Image 3. Immunofluorescence of paraffin embedded mouse heart using NSD3 (ABIN7076233) at dilution of 1:650 (400x lens)

Please check the [product details page](#) for more images. Overall 6 images are available for ABIN7076233.