

Datasheet for ABIN7076260

**anti-ZFP106 antibody****6** Images[Go to Product page](#)

## Overview

Quantity:	100 µL
Target:	ZFP106
Reactivity:	Mouse, Rat
Host:	Rabbit
Clonality:	Polyclonal
Conjugate:	This ZFP106 antibody is un-conjugated
Application:	Immunohistochemistry (IHC), Immunofluorescence (IF)

## Product Details

Immunogen:	Recombinant protein corresponding to Mouse ZFP106
Cross-Reactivity:	Rat
Purification:	Affinity purification

## Target Details

Target:	ZFP106
Alternative Name:	ZFP106 ( <a href="#">ZFP106 Products</a> )
Background:	Zinc-finger proteins contain DNA-binding domains and have a wide variety of functions, most of which encompass some form of transcriptional activation or repression. The majority of zinc-finger proteins contain a Krüppel-type DNA binding domain and a KRAB domain, which is thought to interact with KAP1, thereby recruiting histone modifying proteins. ZFP106 (Zinc finger protein 106), also known as zinc finger protein 474, is a 1883 amino acid human

## Target Details

homolog of the mouse Zfp106 protein and is a member of the Krüppel C2H2-type zinc-finger family.

UniProt: [O88466](#)

## Application Details

Application Notes: IHC/IF (M,R) 1:300-1:1000/1:500-1:1000

Restrictions: For Research Use only

## Handling

Format: Liquid

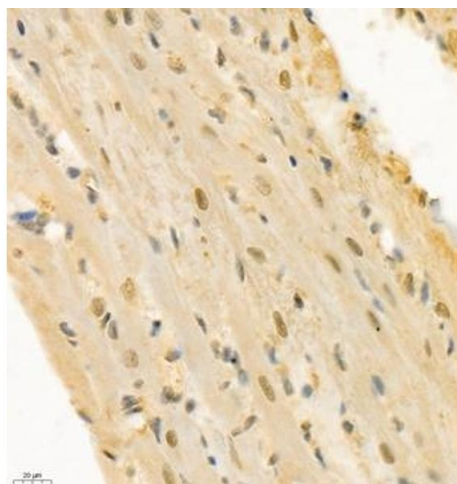
Buffer: PBS, pH 7.4, 0.02 % sodium azide

Preservative: Sodium azide

Precaution of Use: This product contains Sodium azide: a POISONOUS AND HAZARDOUS SUBSTANCE which should be handled by trained staff only.

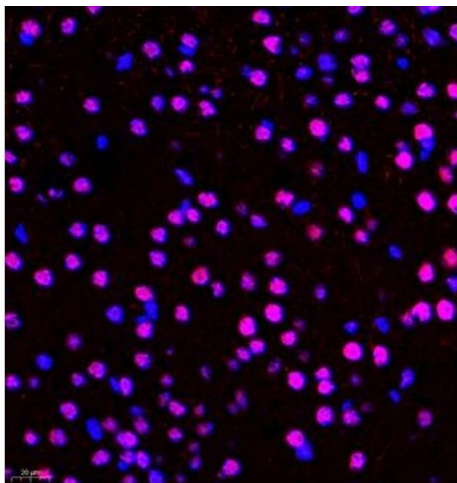
Storage: -20 °C

## Images



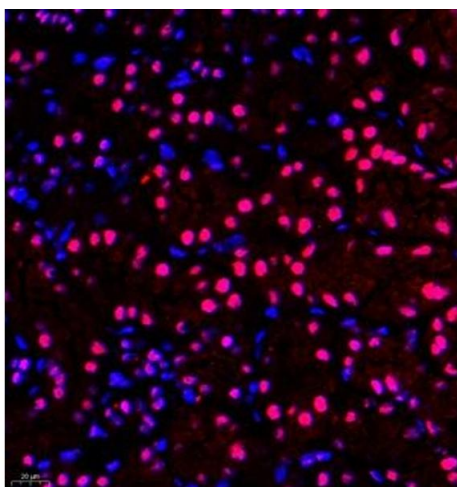
### Immunohistochemistry (Paraffin-embedded Sections)

**Image 1.** Immunohistochemistry of paraffin embedded rat heart using ZNF106 (ABIN7076260) at dilution of 1:300 (400x lens)



#### Immunofluorescence (Paraffin-embedded Sections)

**Image 2.** Immunofluorescence of paraffin embedded mouse brain using ZNF106 (ABIN7076260) at dilution of 1:500 (400x lens)



#### Immunofluorescence (Paraffin-embedded Sections)

**Image 3.** Immunofluorescence of paraffin embedded mouse kidney using ZNF106 (ABIN7076260) at dilution of 1:500 (400x lens)

Please check the [product details page](#) for more images. Overall 6 images are available for ABIN7076260.