

Datasheet for ABIN7076299
anti-kappa Light Chain antibody (APC)



[Go to Product page](#)

1 Image

Overview

| | |
|--------------|--|
| Quantity: | 50 tests |
| Target: | kappa Light Chain |
| Reactivity: | Human |
| Host: | Mouse |
| Clonality: | Monoclonal |
| Conjugate: | This kappa Light Chain antibody is conjugated to APC |
| Application: | Flow Cytometry (FACS) |

Product Details

| | |
|------------------|---|
| Purpose: | Anti-Kappa Light Chain APC Antibody |
| Immunogen: | Human kappa myeloma protein |
| Clone: | TB 28-2 |
| Isotype: | IgG1, kappa |
| Characteristics: | The clone TB28-2 specifically recognizes both soluble and surface expressing kappa light chains of human immunoglobulins. Immunoglobulins bearing kappa light chains are present on approximately 60 % of normal B lymphocytes and all Igk+ leukemic cells. In serum, anti-kappa reacts with immunoglobulins bearing kappa light chains as well as free kappa light chains. |
| Purification: | Purified |
| Purity: | >95 % |
| Grade: | GMP Grade |

Target Details

| | |
|-------------------|---|
| Target: | kappa Light Chain |
| Alternative Name: | Ig Kappa Light Chain (kappa Light Chain Products) |
| Gene ID: | 50802 |
| UniProt: | P01834 |

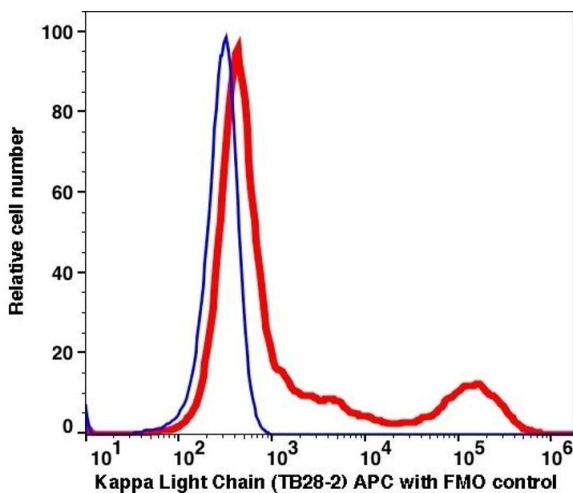
Application Details

| | |
|--------------------|---|
| Application Notes: | FC: 5 µL/test We recommend that every lab carries out an initial titration study before running your samples to ensure that the optimal concentration is selected for your application. |
| Restrictions: | For Research Use only |

Handling

| | |
|--------------------|--|
| Format: | Liquid |
| Buffer: | PBS, pH 7.2, 0.09 % Sodium azide and 0.2 % (w/v) BSA |
| Preservative: | Sodium azide |
| Precaution of Use: | This product contains Sodium azide: a POISONOUS AND HAZARDOUS SUBSTANCE which should be handled by trained staff only. |
| Storage: | 4 °C |
| Storage Comment: | 2-8°C, Conjugated antibodies should never be frozen. |

Images



Flow Cytometry

Image 1.