

## Datasheet for ABIN7076377 **anti-CD14 antibody (FITC)**



[Go to Product page](#)

### 1 Image

#### Overview

Quantity:	50 tests
Target:	CD14
Reactivity:	Human, Cynomolgus, Rhesus Monkey
Host:	Mouse
Clonality:	Monoclonal
Conjugate:	This CD14 antibody is conjugated to FITC
Application:	Flow Cytometry (FACS)

#### Product Details

Purpose:	CD14 FITC Antibody
Immunogen:	Full-length human CD14 protein
Clone:	M5E2
Isotype:	IgG2a, kappa
Characteristics:	Clone M5E2 reacts with a nonfunctional domain of human CD14, a 53-55 kDa glycosylphosphatidylinositol (GPI)- anchored and single chain glycoprotein expressed at high levels on monocytes. Additionally, the CD14 reacts with monocytes, interfollicular macrophages, reticular dendritic cells and some Langerhans cells. The binding of the CD14 does not inhibit CD14 mediated activities, and is useful for detecting CD14 expression by immunofluorescence and or immunocytochemical methods.
Purification:	Purified
Purity:	>95 %

## Product Details

---

Grade: GMP Grade

## Target Details

---

Target: CD14

Alternative Name: CD14 ([CD14 Products](#))

Gene ID: 929

UniProt: [P08571](#)

Pathways: [TLR Signaling](#), [Activation of Innate immune Response](#), [Cellular Response to Molecule of Bacterial Origin](#), [Toll-Like Receptors Cascades](#)

## Application Details

---

Application Notes: FC: 5 µL/test We recommend that every lab carries out an initial titration study before running your samples to ensure that the optimal concentration is selected for your application.

Restrictions: For Research Use only

## Handling

---

Format: Liquid

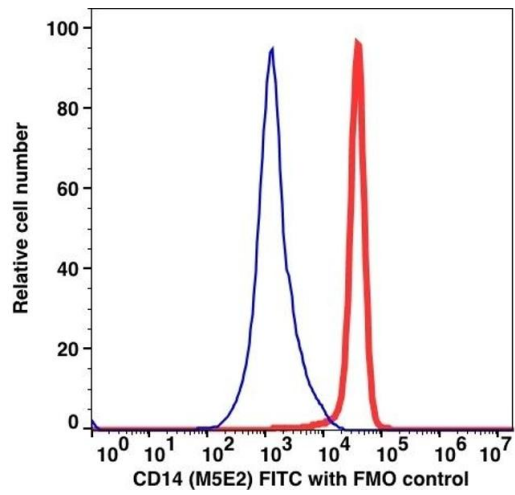
Buffer: PBS, pH 7.2, 0.09 % Sodium azide and 0.2 % (w/v) BSA

Preservative: Sodium azide

Precaution of Use: This product contains Sodium azide: a POISONOUS AND HAZARDOUS SUBSTANCE which should be handled by trained staff only.

Storage: 4 °C

Storage Comment: 2-8°C, Conjugated antibodies should never be frozen.



### Flow Cytometry

Image 1.