

Datasheet for ABIN7076469  
**anti-CD24 antibody (PE)**



[Go to Product page](#)

1 Image

## Overview

Quantity:	50 tests
Target:	CD24
Reactivity:	Human
Host:	Mouse
Clonality:	Monoclonal
Conjugate:	This CD24 antibody is conjugated to PE
Application:	Flow Cytometry (FACS)

## Product Details

Purpose:	CD24 PE Antibody
Immunogen:	Glycoproteins purified from human NALM-1 cell line
Clone:	SN3
Isotype:	IgG1, kappa
Characteristics:	The clone SN3, a mouse monoclonal antibody, binds with a ~35-45 kDa cell surface glycosyl-phosphatidylinositol-anchored heat-stable antigen known as CD24. It is variably expressed on the surface of all B lineage cells (but not plasma cells), granulocytes, follicular dendritic cells, and epithelial cells and may play a role in the regulation of activation, proliferation and maturation of these cells.
Purification:	Purified
Purity:	>95 %

## Product Details

Grade: GMP Grade (Analyte)

## Target Details

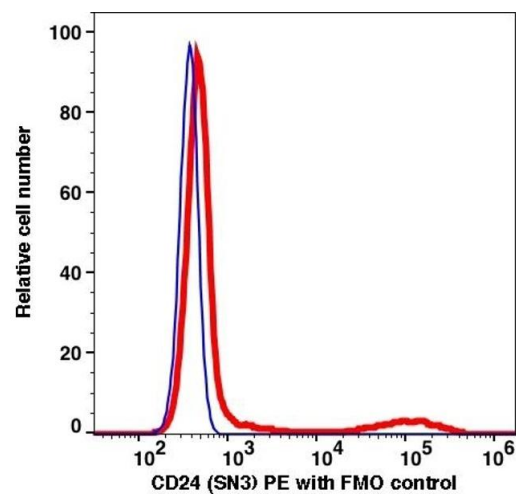
Target:	CD24
Alternative Name:	CD24 ( <a href="#">CD24 Products</a> )
Gene ID:	100133941
UniProt:	<a href="#">P25063</a>
Pathways:	<a href="#">Regulation of Leukocyte Mediated Immunity</a> , <a href="#">Positive Regulation of Immune Effector Process</a> , <a href="#">Activated T Cell Proliferation</a>

## Application Details

Application Notes:	FC: 5 µL/test We recommend that every lab carries out an initial titration study before running your samples to ensure that the optimal concentration is selected for your application.
Restrictions:	For Research Use only

## Handling

Format:	Liquid
Buffer:	PBS, pH 7.2, 0.09 % Sodium azide and 0.2 % (w/v) BSA
Preservative:	Sodium azide
Precaution of Use:	This product contains Sodium azide: a POISONOUS AND HAZARDOUS SUBSTANCE which should be handled by trained staff only.
Storage:	4 °C
Storage Comment:	2-8°C, Conjugated antibodies should never be frozen.



Flow Cytometry

Image 1.