

Datasheet for ABIN7076551
anti-CD39 antibody (FITC)



[Go to Product page](#)

1 Image

Overview

Quantity:	50 tests
Target:	CD39 (ENTPD1)
Reactivity:	Human
Host:	Mouse
Clonality:	Monoclonal
Conjugate:	This CD39 antibody is conjugated to FITC
Application:	Flow Cytometry (FACS)

Product Details

Purpose:	CD39 FITC Antibody
Immunogen:	EBV-transformed B cells from a patient with MHC class-II deficiency re-expressing class-II antigens
Clone:	CAT-13-0B10
Isotype:	IgG1, kappa
Characteristics:	<p>The clone CAT-13.0B10, a mouse monoclonal antibody recognizes a 70 - 100 kDa cell surface antigen known as CD39. It is also known as ATPDase or Ecto-ATP diphosphohydrolase as it has intrinsic Ecto-ATPase activity. CD39 is expressed on peripheral blood B cells and on a subset of T cells, and its expression level increases upon immune activation. The CD4+ CD39+ T cells catalyze cleavage of adenosine triphosphate (ATP) to adenosine monophosphate (AMP), largely overlap with the CD4+ CD25high FOXP3+ regulatory T cells and mediate potent immune suppression. CD39 also plays an important role in immune activation.</p>

Product Details

Purification:	Purified
Purity:	>95 %
Grade:	GMP Grade

Target Details

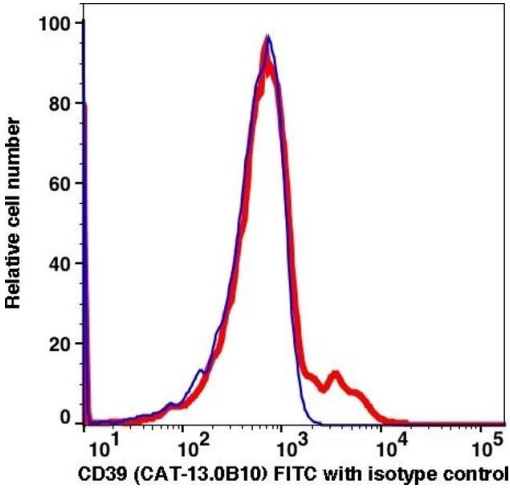
Target:	CD39 (ENTPD1)
Alternative Name:	CD39 (ENTPD1 Products)
Gene ID:	953
UniProt:	P49961

Application Details

Application Notes:	FC: 5 µL/test We recommend that every lab carries out an initial titration study before running your samples to ensure that the optimal concentration is selected for your application.
Restrictions:	For Research Use only

Handling

Format:	Liquid
Buffer:	PBS, pH 7.2, 0.09 % Sodium azide and 0.2 % (w/v) BSA
Preservative:	Sodium azide
Precaution of Use:	This product contains Sodium azide: a POISONOUS AND HAZARDOUS SUBSTANCE which should be handled by trained staff only.
Storage:	4 °C
Storage Comment:	2-8°C, Conjugated antibodies should never be frozen.



Flow Cytometry

Image 1.