

Datasheet for ABIN7076625  
**anti-CD45RA antibody (PE)**



[Go to Product page](#)

1 Image

## Overview

Quantity:	50 tests
Target:	CD45RA
Reactivity:	Human
Host:	Mouse
Clonality:	Monoclonal
Conjugate:	This CD45RA antibody is conjugated to PE
Application:	Flow Cytometry (FACS)

## Product Details

Purpose:	CD45RA PE Antibody
Immunogen:	An EBV-transformed B cell line from a patient with MHC class II deficiency
Clone:	OTH-74D4
Isotype:	IgG1, kappa
Characteristics:	The clone OTH-74D4 recognizes a 220 kD isoform of the leucocyte common antigen (LCA) of the CD45 antigen family. The CD45RA antigen is expressed mostly on naive CD4+, CD8+ and gd+ T and on most B and NK lymphocytes. Generally the CD45RA antigen density decreases upon activation. The CD45RA expression on immune cells is used as one of the key surface antigen to determine the functional status and also to define the end-stage of human T cells.
Purification:	Purified
Purity:	>95 %

## Product Details

---

Grade: GMP Grade (Analyte)

## Target Details

---

Target: CD45RA

Alternative Name: CD45RA ([CD45RA Products](#))

Gene ID: 5788

NCBI Accession: [NM\\_002838](#)

UniProt: [P08575](#)

## Application Details

---

Application Notes: FC: 5 µL/test We recommend that every lab carries out an initial titration study before running your samples to ensure that the optimal concentration is selected for your application.

Restrictions: For Research Use only

## Handling

---

Format: Liquid

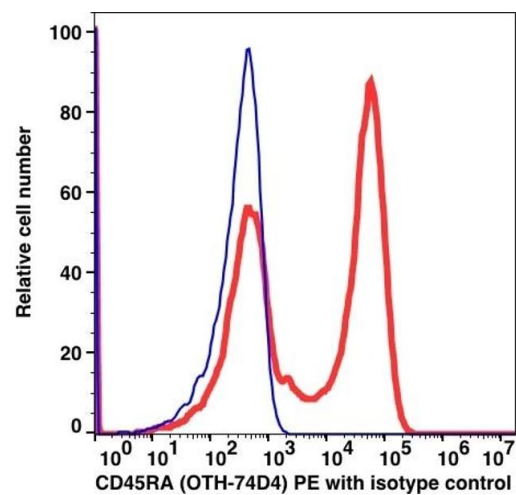
Buffer: PBS, pH 7.2, 0.09 % Sodium azide and 0.2 % (w/v) BSA

Preservative: Sodium azide

Precaution of Use: This product contains Sodium azide: a POISONOUS AND HAZARDOUS SUBSTANCE which should be handled by trained staff only.

Storage: 4 °C

Storage Comment: 2-8°C, Conjugated antibodies should never be frozen.



Flow Cytometry

Image 1.