

Datasheet for ABIN7076653
anti-CD56 antibody (FITC)



[Go to Product page](#)

1 Image

Overview

| | |
|--------------|--|
| Quantity: | 50 tests |
| Target: | CD56 (NCAM1) |
| Reactivity: | Human |
| Host: | Mouse |
| Clonality: | Monoclonal |
| Conjugate: | This CD56 antibody is conjugated to FITC |
| Application: | Flow Cytometry (FACS) |

Product Details

| | |
|------------------|---|
| Purpose: | CD56 FITC Antibody |
| Immunogen: | KG1a cell line |
| Clone: | MY31 |
| Isotype: | IgG1, kappa |
| Characteristics: | Clone MY31, a mouse antibody, binds to the human 140- kDa glycoprotein, an isoform of neural cell adhesion molecule (NCAM) known as CD56. CD56 and CD16 expressing lymphocytes are primarily considered as human NK cells and NK-T cells. A subset of CD56+ NK cells play a unique functional role in the innate immune response as the primary source of NK cell-derived immunoregulatory cytokines, regulated in part by differential monokine production. CD56 is also expressed in normal and neoplastic human neuroendocrine tissues, certain large granular lymphocyte (LGL) leukemias, small-cell lung carcinomas, neuronal derived tumors, myelomas, and myeloid leukemias. Increased CD56 + lymphocyte subsets in peripheral blood has a |

Product Details

| | |
|---------------|--|
| | significant predictive or prognostic factor in metastatic breast cancer. |
| Purification: | Purified |
| Purity: | >95 % |
| Grade: | GMP Grade (Analyte) |

Target Details

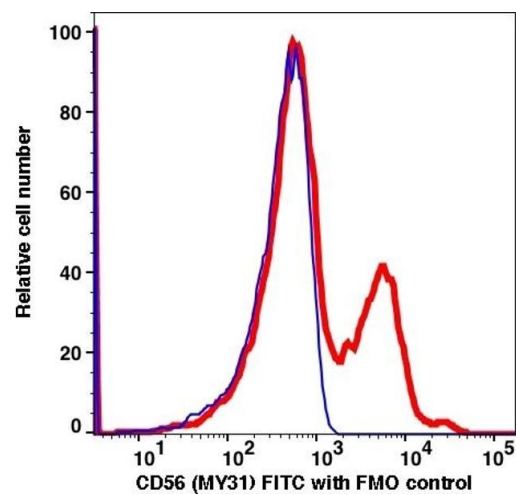
| | |
|-------------------|---|
| Target: | CD56 (NCAM1) |
| Alternative Name: | CD56 (NCAM1 Products) |
| Gene ID: | 4684 |
| UniProt: | P13591 |

Application Details

| | |
|--------------------|---|
| Application Notes: | FC: 5 µL/test We recommend that every lab carries out an initial titration study before running your samples to ensure that the optimal concentration is selected for your application. |
| Restrictions: | For Research Use only |

Handling

| | |
|--------------------|--|
| Format: | Liquid |
| Buffer: | PBS, pH 7.2, 0.09 % Sodium azide and 0.2 % (w/v) BSA |
| Preservative: | Sodium azide |
| Precaution of Use: | This product contains Sodium azide: a POISONOUS AND HAZARDOUS SUBSTANCE which should be handled by trained staff only. |
| Storage: | 4 °C |
| Storage Comment: | 2-8°C, Conjugated antibodies should never be frozen. |



Flow Cytometry

Image 1.