

Datasheet for ABIN7076675 **anti-CD58 antibody (PE)**



[Go to Product page](#)

1 Image

Overview

Quantity:	50 tests
Target:	CD58
Reactivity:	Human
Host:	Mouse
Clonality:	Monoclonal
Conjugate:	This CD58 antibody is conjugated to PE
Application:	Flow Cytometry (FACS)

Product Details

Purpose:	CD58 PE Antibody
Immunogen:	Human cytolytic T cells
Clone:	TS2-9
Isotype:	IgG1, kappa
Characteristics:	<p>The clone TS2/9 recognizes a 45-70 kD cell surface protein, currently known as CD58. It is a member of the immunoglobulin superfamily previously known as lymphocyte function-associated antigen 3 (LFA-3). Both hematopoietic and non-hematopoietic cells including B and T cells, monocytes, erythrocytes, endothelial cells, epithelial cells, and fibroblasts express CD58. CD58 has two isoforms and is highly expressed on antigen specific memory T cells and as well as dendritic cells. The CD58 mediates cellular adhesion and participates in signal transduction when it binds to its ligand, the CD2 antigen. Cellular interactions regulated by the CD58/CD2 antigens are involved in the antigen-independent adhesion pathway and cytotoxic T lymphocyte</p>

Product Details

(CTL) activity.

Purification: Purified

Purity: >95 %

Grade: GMP Grade

Target Details

Target: CD58

Alternative Name: CD58 ([CD58 Products](#))

Gene ID: 965

UniProt: [P19256](#)

Application Details

Application Notes: FC: 5 µL/test We recommend that every lab carries out an initial titration study before running your samples to ensure that the optimal concentration is selected for your application.

Restrictions: For Research Use only

Handling

Format: Liquid

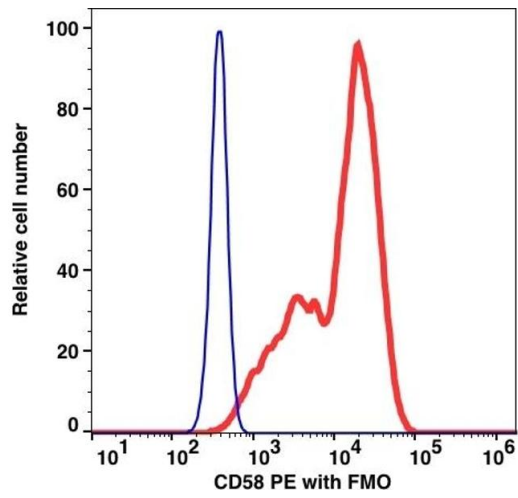
Buffer: PBS, pH 7.2, 0.09 % Sodium azide and 0.2 % (w/v) BSA

Preservative: Sodium azide

Precaution of Use: This product contains Sodium azide: a POISONOUS AND HAZARDOUS SUBSTANCE which should be handled by trained staff only.

Storage: 4 °C

Storage Comment: 2-8°C, Conjugated antibodies should never be frozen.



Flow Cytometry

Image 1.