

Datasheet for ABIN7076691  
**anti-CD68 antibody (FITC)**



[Go to Product page](#)

1 Image

## Overview

Quantity:	50 tests
Target:	CD68
Reactivity:	Human
Host:	Mouse
Clonality:	Monoclonal
Conjugate:	This CD68 antibody is conjugated to FITC
Application:	Flow Cytometry (FACS)

## Product Details

Purpose:	CD68 FITC Antibody
Immunogen:	Lysosomal fraction of human alveolar macrophages
Clone:	KP1
Isotype:	IgG1, kappa
Characteristics:	<p>The clone KP1 recognizes 110 kDa highly glycosylated lysosomal-associated membrane protein (LAMP) known as CD68. It plays important role in the immune process of endocytosis and/or lysosomal trafficking mostly carried out by cellular components of innate immunity. The CD68 is abundantly expressed in the cytoplasmic granules of macrophages, monocytes, neutrophils, basophils, subset of hematopoietic progenitors, <math>\gamma/\delta</math> T cells, NK cells, LAK cells, subset of B cells, fibroblasts, and endothelial cells. Studies suggest that KP1 is a very useful tool for studying disorders of the monocyte/macrophage system, including both reactive and neoplastic states.</p>

## Product Details

Purification:	Purified
Purity:	>95 %
Grade:	GMP Grade

## Target Details

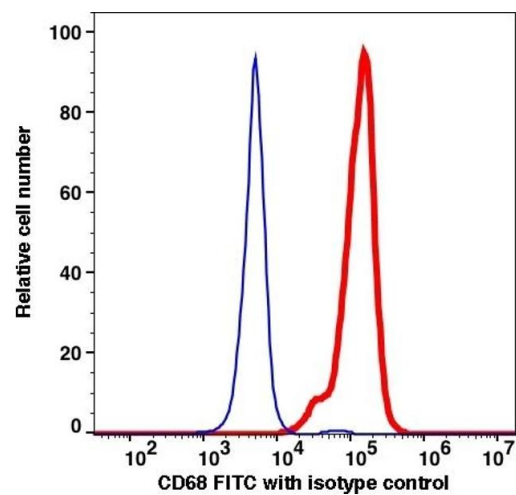
Target:	CD68
Alternative Name:	CD68 ( <a href="#">CD68 Products</a> )
Gene ID:	968
UniProt:	<a href="#">P34810</a>

## Application Details

Application Notes:	FC: 5 µL/test We recommend that every lab carries out an initial titration study before running your samples to ensure that the optimal concentration is selected for your application.
Restrictions:	For Research Use only

## Handling

Format:	Liquid
Buffer:	PBS, pH 7.2, 0.09 % Sodium azide and 0.2 % (w/v) BSA
Preservative:	Sodium azide
Precaution of Use:	This product contains Sodium azide: a POISONOUS AND HAZARDOUS SUBSTANCE which should be handled by trained staff only.
Storage:	4 °C
Storage Comment:	2-8°C, Conjugated antibodies should never be frozen.



Flow Cytometry

Image 1.