

Datasheet for ABIN7076816 **anti-Endoglin antibody (FITC)**



[Go to Product page](#)

1 Image

Overview

| | |
|--------------|--|
| Quantity: | 100 tests |
| Target: | Endoglin (ENG) |
| Reactivity: | Human |
| Host: | Mouse |
| Clonality: | Monoclonal |
| Conjugate: | This Endoglin antibody is conjugated to FITC |
| Application: | Flow Cytometry (FACS) |

Product Details

| | |
|------------------|--|
| Purpose: | CD105 FITC Antibody |
| Immunogen: | EDG (CD105) isolated from acute lymphoblastic leukemia cells |
| Clone: | SN6h |
| Isotype: | IgG1, kappa |
| Characteristics: | <p>The clone SN6h, a mouse monoclonal antibody selectively binds to a ~95 kDa type I transmembrane homodimer glycoprotein known as CD105. It is also encoded by END (Endoglin) and belongs to the TGF-β type III receptor family. CD105 mostly expressed on vascular endothelial cells, placental syncytiotrophoblasts, mesenchymal stem cells, erythroid precursors, activated macrophages, pre-B cells, and some tumor cells and cell lines including U937 cells. CD105 works as an important regulatory component of the TGF-β receptor system. CD105 expression is increased on activated endothelium tissues undergoing angiogenesis and also in cases of wound healing or dermal inflammation. CD105 may also be involved in the</p> |

Product Details

solid tumor metastasis, in regulation of cytoskeletal cellular organization as well as migration.

Purification: Purified

Purity: >95 %

Grade: GMP Grade

Target Details

Target: Endoglin (ENG)

Alternative Name: CD105 ([ENG Products](#))

Gene ID: 2022

UniProt: [P17813](#)

Application Details

Application Notes: Optimal working dilution should be determined by the investigator.

Restrictions: For Research Use only

Handling

Format: Liquid

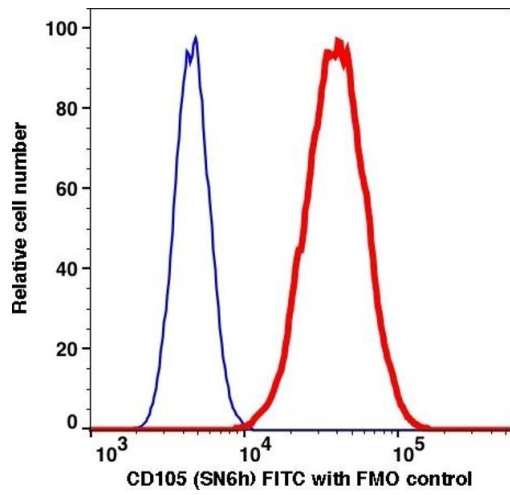
Buffer: PBS pH 7.2, 0.2 % (w/v) BSA, 0.09 % (w/v) sodium azide

Preservative: Sodium azide

Precaution of Use: This product contains Sodium azide: a POISONOUS AND HAZARDOUS SUBSTANCE which should be handled by trained staff only.

Storage: 4 °C

Storage Comment: 2-8°C, Conjugated antibodies should never be frozen.



Flow Cytometry

Image 1.